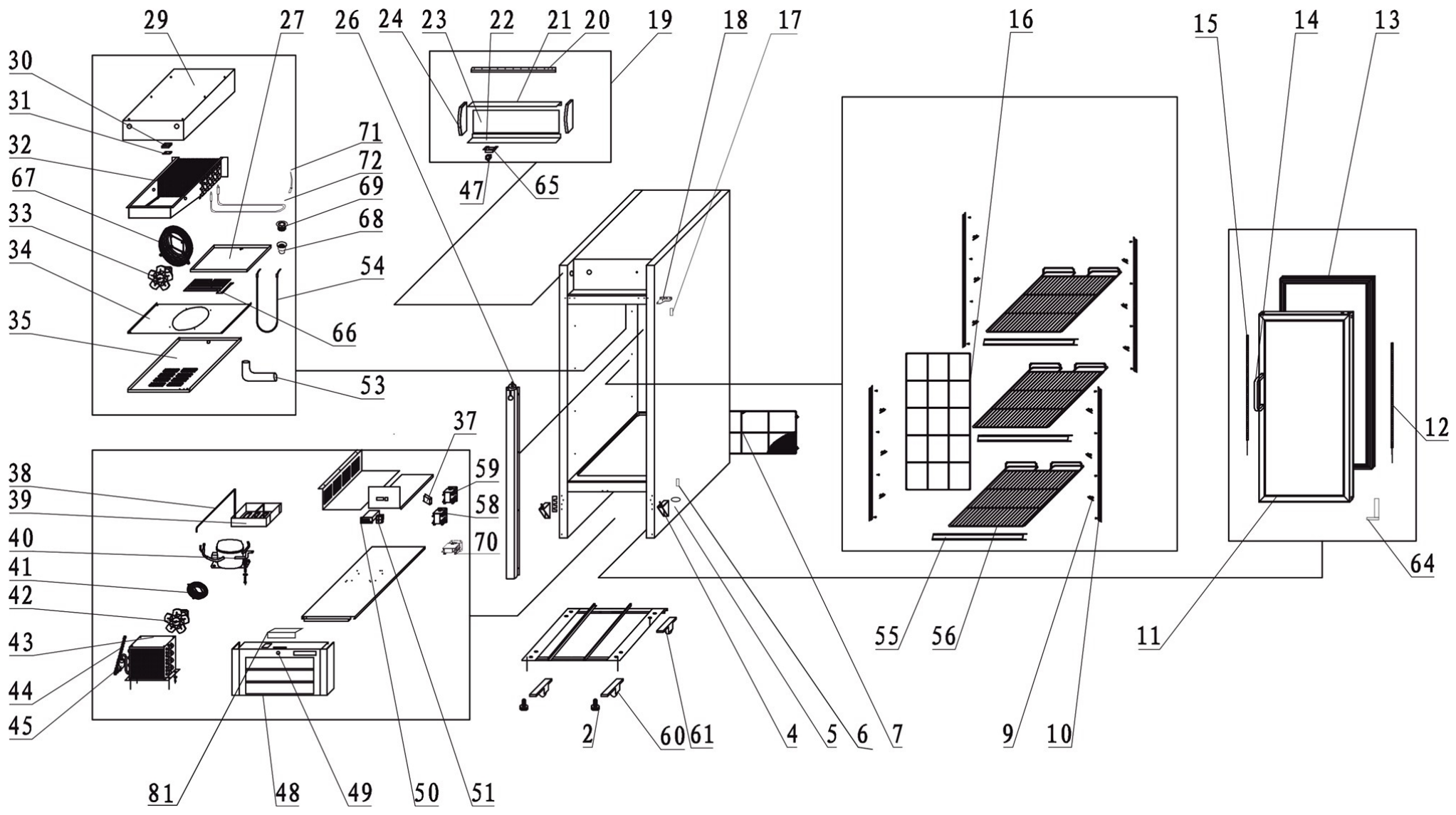


# Ersatzteilliste-Explosionszeichnung

## Gewerbetiefkühlschrank TKU 440 G-LED

[Artikel-Nr.: 435225001]





# 16191 / NF2500G

Position	ItemNo	Description
02	14579	Feet M8
04	12809	Door Hinge Down Left/Right
05	12931	Spacer For Down Hinge
06	12826	Down Hinge Axis Jacket
07	11228	Rear Grill
09	15082	Shelf Clip
10	15135	Shelf Support
11	11911	Door
12	15654	LED Strip Right Side
13	12589	Gasket
14	12691	Handle Black Back Mounted
15	15653	LED Strip Left Side
16	10764	Back Grill
17	38538	Top Hinge Bushing
18	12818	Door Hinge Upper Right
20	10264	Canopy LED Strip
21	10289	Canopy Top Frame
22	10229	Canopy Bottom Frame
23	15405	Lamp Cover
24	10241	Canopy End Cover
25	10237	Canopy Complete
26	10474	Suction Pipe Cover
27	11545	Evaporator Water Pan 520x225
29	14351	Evaporator Box Plate
30	13913	Sensor Fixed Clip
31	13901	Probe Padding
32	14335	Evaporator 2014-2
	14344	Evaporator Before 2014-2
33	13315	Circle Fan Bd01-01
34	13449	Evaporator Fan Support
35	13431	Evaporator Fan Cover
37	13656	Junction Box
38	14519	Evaporator Pipe
39	11568	Water Box
40	11817	Compressor SC21CNX.2 R290
41	13305	Basket Guard Grill
42	13382	Condenser/Evaporator Fan
43	14113	Condenser
44	14503	Capillary Tube
45	15724	Filter Drier 25 G
47	12188	Door Switch
48	31401	Bottom Panel Hexagonal
49	10683	Lock
50	14066	Thermostat XR06CX 20A Relay Blue Display
51	13754	Main Switch
53	16872	Drain Pipe Angled
54	13255	Drain Pipe Heater 1300 mm
	13256	Drain Pipe Heater 300 mm
55	14948	List For Shelves
56	15026	Shelf 550 x 490 mm.
58	12429	Transformer For Door Heater
59	15681	Transformer For LED Light
60	14612	Front Roller
61	14606	Back Roller
64	12937	Spring Hinge
65	12193	Door Switch Holder
66	13301	Water Pan Heater 510x215
68	11557	Internal Water Pipe
69	11594	Water Pipe Nut

70	13675	Motor Contactor
71	13896	Probe NTC Dixell/Carel 10 Kohm
72	13226	Defrost Heater 2016
80	14035	Thermostat Panel With Cover
81	10696	Lock Bracket
82	14034	Thermostat Panel Cover
99	14948	List For Shelves

2023-01-16

**Finanzen/Service**  
**28307 Bremen**  
Thalenhorststraße 15  
Tel.+49 421 48557-0  
Fax+49 421 488650  
bremen@nordcap.de

**Vertrieb Ost**  
**12681 Berlin**  
Wolfener Straße 32/34, Haus K  
Tel.+49 30 936684-0  
Fax+49 30 936684-44  
berlin@nordcap.de

**Vertrieb West**  
**40699 Erkrath**  
Max-Planck-Straße 30  
Tel.+49 211 540054-0  
Fax+49 211 540054-54  
erkrath@nordcap.de

**Vertrieb Nord**  
**21079 Hamburg**  
Großmoorbogen 5  
Tel.+49 40 766183-0  
Fax+49 40 770799  
hamburg@nordcap.de

**Vertrieb Süd**  
**55218 Ingelheim**  
Hermann-Bopp-Straße 4  
Tel.+49 6132 7101-0  
Fax+49 6132 7101-20  
ingelheim@nordcap.de



[www.nordcap.de](http://www.nordcap.de)