

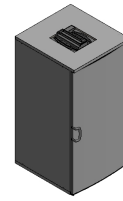
# Ersatzteilliste-Explosionszeichnung

## COOL-LINE Minikühlzelle MZ 1850

[Artikel-Nr.: 46710404001-0-0-0]



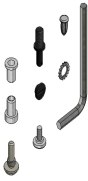
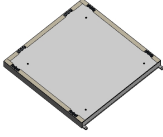


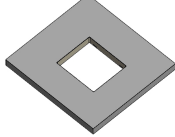



Art. Code: 10404001-0-0-0



Mini Cold Room (Chiller) V4-1850  
 Mini Chambre Froide (Réfrigération) V4-1850  
 Armário Stock V4-1850  
 Mini Cella Frigorifera (TN) V4-1850  
 Minikühlzelle (Kühl) V4-1850  
 Mini Cámara Frigorífica (Refrigeración) V4-1850

Code	Description	
42601047	Deflector grid V4 Grille déflectrice V4 Grelha Deflectora V4 Griglia deflettrice V4 Ablenkgitter V4 Rejilla deflectora V4	
42601066	Floor covers Cache-pieds V1 Taco para Pés V1 Cappucci del pavimento Abdeckungen für Paneelboden Tapa furos del suelo	
42601068	Screw cap for 6 mm hexagonal hole Cache pour trou à six pans 6 mm Taco Cinza p/ Furo Sextavado de 6 mm Cappucci per perforazione ad esagono di 6 mm Kunststoffstopfen für Bohrung mit 6 mm Sechskant Tapone para perforación hezagonal de 6 mm	
45903001	Hex key 6 mm Clé Allen 6 mm Chave Umbrako 6 mm Chiave di brugola 6 mm Innensechskantschlüssel 6 mm Llave Allen 6 mm	
45904016	Stainless steel shelf Grille inox Grelha Trav. Redondas do Armário - V4 (61404045) Griglia acciaio CNS Tragrost Rejilla inox	
45907001	Lower stainless steel stud screw diam.15 x 27 mm Boulon inférieur en acier inox diam.15 x 27 mm Perno Inferior Inox diam.15 x 27 mm Perno inferiore in acciaio inox diam.15 x 27 mm Unterer Bolzen aus Edelstahl diam.15 x 27 mm Perno inferior en acero inoxidable diam.15 x 27 mm	
45907009	Stud screw for shelf post Boulon du montant de la grille V4 Perno Fixação Montante V4 Perno del montante verticale della griglia Bolzen der Auflageschiene für Tragrost Perno del montante vertical de la rejilla	
45907011	Upper galvanized bolt diam.11,5 x 32 mm Boulon supérieur galvanisé diam.11,5 x 32 mm Perno Superior V4 Zinc. diam.11,5 x 32 mm Perno superiore zincato diam.11,5 x 32 mm Oberer verzinkter Bolzen aus Edelstahl diam.11,5 x 32 mm Perno superior galvanizado diam.11,5 x 32 mm	

61404013	<p>Back panel  Panneau arrière  Painel das Costas Armário 1850 (V4-C01)  Pannello posteriore  Rückwandpaneel  Panel posterior</p>	
61404024	<p>Shelf post  Montant de la grille  Montante da Grelha - V4  Montante verticale della griglia  Auflageschiene für Tragrost  Montante vertical de la rejilla</p>	
61404086	<p>Ironmongery set  Ensemble de quincaillerie  Conjunto de Ferragens Armário - V4  Set di ferramenta  Eisenwaren Einsatz  Conjunto de ferrería</p>	
61404126	<p>Floor panel  Panneau de sol  Painel do Fundo Armário - V4 (V4-F01)  Pannello pavimento  Paneelboden  Panel de suelo</p>	
61404132	<p>Right hand side panel  Panneau latéral droite  Painel Lateral Dir. Armário 1850 (V4-L01)  Pannello laterale destra  Rechtsseitiges Seitenwandpaneel  Panel lateral derecha</p>	
61404136	<p>Left hand side panel  Panneau latéral gauche  Painel Lateral Esq. do Armário 1850 (V4-L01)  Pannello laterale sinistra  Linksseitiges Seitenwandpaneel  Panel lateral izquierda</p>	
61404138	<p>Ceiling panel  Panneau de plafond  Painel do Tampo do Armário - V4 (V4-T01)  Pannello di soffitto  Deckenpaneel  Panel de techo</p>	
61404256	<p>Door  Porte  Porta do Armário 1850 (V4-P1)  Porta  Tür  Puerta</p>	

**Finanzen/Service**

**28307 Bremen**  
Thalenhorststraße 15  
Tel.+49 421 48557-0  
Fax+49 421 488650  
bremen@nordcap.de

**Vertrieb Ost**

**12681 Berlin**  
Wolfener Straße 32/34, Haus K  
Tel.+49 30 936684-0  
Fax+49 30 936684-44  
berlin@nordcap.de

**Vertrieb West**

**40699 Erkrath**  
Max-Planck-Straße 30  
Tel.+49 211 540054-0  
Fax+49 211 540054-54  
erkrath@nordcap.de

**Vertrieb Nord**

**21079 Hamburg**  
Großmoorbogen 5  
Tel.+49 40 766183-0  
Fax+49 40 770799  
hamburg@nordcap.de

**Vertrieb Süd**

**55218 Ingelheim**  
Hermann-Bopp-Straße 4  
Tel.+49 6132 7101-0  
Fax+49 6132 7101-20  
ingelheim@nordcap.de

