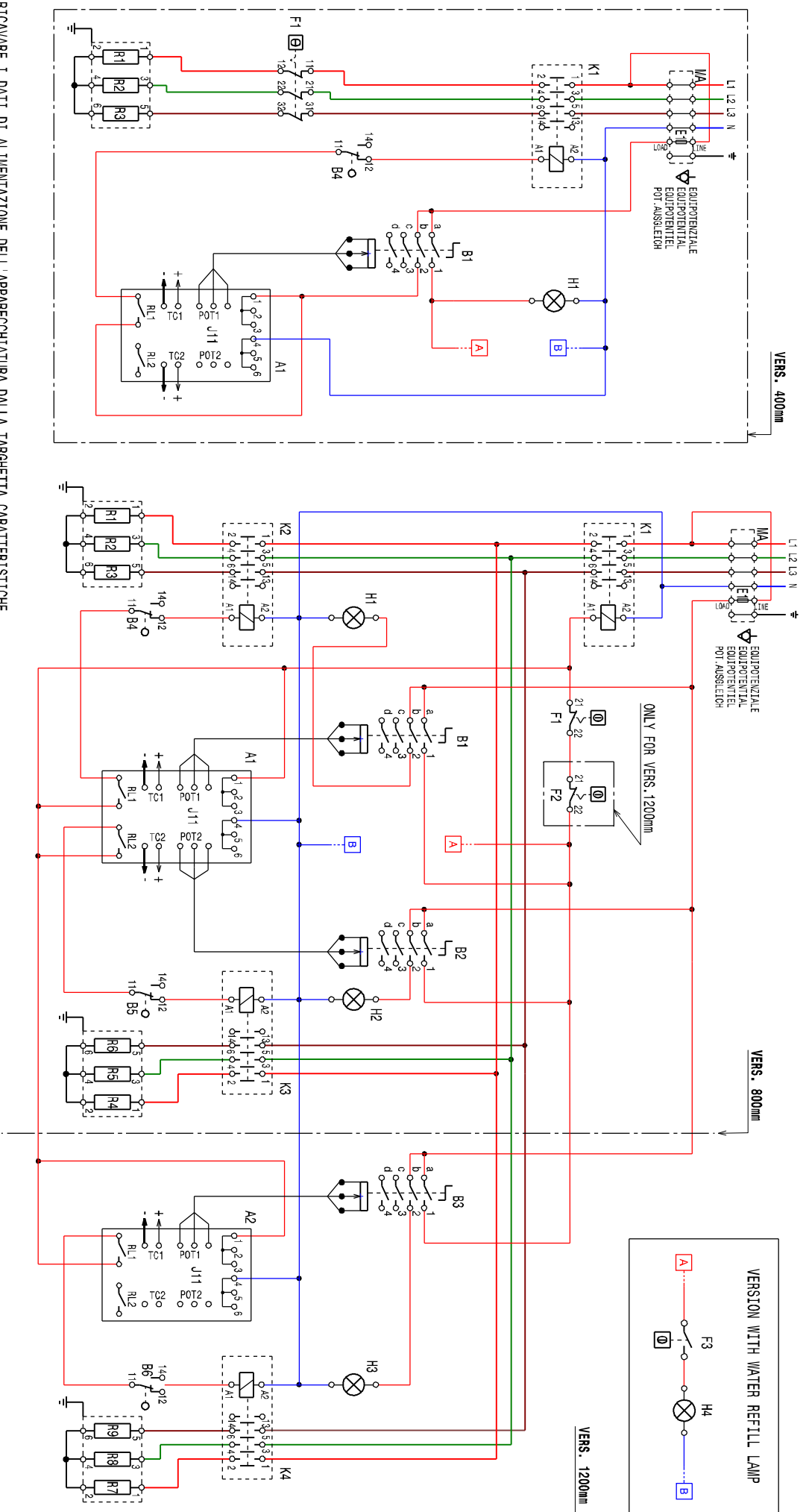


Schaltplan

Elektro-Kontaktgrill ERG9 / 1HT-HP





RICAVARE I DATI DI ALIMENTAZIONE DELL'APPARECCHIATURA DALLA TARGHETTA CARATTERISTICHE.
 FOR APPLIANCE POWER SUPPLY VALUES REFER TO DATA LABEL.

E1: 1A "T"

MODEL 700 (400-415V)
 400V 3N ~ 50/60Hz
 3,45 kW/ 5A VERS. 400mm
 6,9 kW/ 10A VERS. 800mm
 10,35 kW/ 15A VERS. 1200mm

MODEL 700 (380-400V)
 380V 3N ~ 50/60Hz
 3,45 kW/ 5,2A VERS. 400mm
 6,9 kW/ 10,5A VERS. 800mm
 9,9 kW/ 13,9A VERS. 1200mm

MODEL 900 (415-430V)
 430V 3N ~ 50/60Hz
 3,3 kW/ 4,4A VERS. 400mm
 6,6 kW/ 8,8A VERS. 800mm
 9,9 kW/ 13,3A VERS. 1200mm

MODEL 900 (400-415V)
 400V 3N ~ 50/60Hz
 5,4 kW/ 7,8A VERS. 400mm
 10,8 kW/ 15,6A VERS. 800mm
 16,2 kW/ 23,4A VERS. 1200mm

MODEL 900 (380-400V)
 380V 3N ~ 50/60Hz
 5,4 kW/ 8,2A VERS. 400mm
 10,8 kW/ 16,4A VERS. 800mm
 16,2 kW/ 24,6A VERS. 1200mm

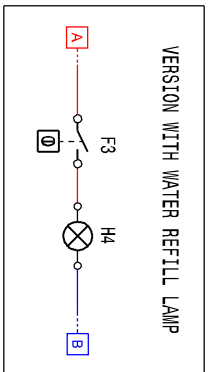
MODEL 900 (415-430V)
 430V 3N ~ 50/60Hz
 5,2 kW/ 6,9A VERS. 400mm
 10,3 kW/ 13,9A VERS. 800mm
 15,5 kW/ 20,8A VERS. 1200mm

F3	TERMOSTATO VASCA	TUB THERMOSTAT
B4-B5-B6	MICROINTERRUTTORE	MICROSWITCH
F1-F2	LIMITATORE DI TEMPERATURA	SAFETY THERMOSTAT
E1	FUSIBILE	FUSE
K1-2-3-4	CONTATTORE	CONTACTOR
R1-9	RESISTENZA	HEATING ELEMENT
A1-A2	SCHEDA CONTROLLO ENERGIA	ENERGY CONTROL BOARD
H4	LAMPADA SEGNALEZIONE RICARICO ACQUA	WATER REFILL LAMP
H1-2-3	LAMPADA "CORRENTE INSERITA"	POWER ON LAMP
B1-2-3	INTERRUTTORE + POTENZIOMETRO	SWITCH + POTENTIOMETER
MA	MORSETTIERA	MAIN TERMINAL BOARD

ELECTRIC DIAGRAM GRILL HP 700-900 400V 3P+N

From S/N :

N° : 602898M00



Finanzen/Service

28307 Bremen
Thalendorststraße 15
Tel.+49 421 48557-0
Fax+49 421 488650
bremen@nordcap.de

Vertrieb Ost

12681 Berlin
Wolfener Straße 32/34, HausK
Tel.+49 30 936684-0
Fax+49 30 936684-44
berlin@nordcap.de

Vertrieb West

40699 Erkrath
Max-Planck-Straße 30
Tel.+49 211 540054-0
Fax+49 211 540054-54
erkrath@nordcap.de

Vertrieb Nord

21079 Hamburg
Großmoorbogen 5
Tel.+49 40 766183-0
Fax+49 40 770799
hamburg@nordcap.de

Vertrieb Süd

55218 Ingelheim
Hermann-Bopp-Straße 4
Tel.+49 6132 7101-0
Fax+49 6132 7101-20
ingelheim@nordcap.de



www.nordcap.de