

Ersatzteilliste-Explosionszeichnung

Gasherd **GH7 / 2FLT**

[Artikel-Nr.: 406372000]

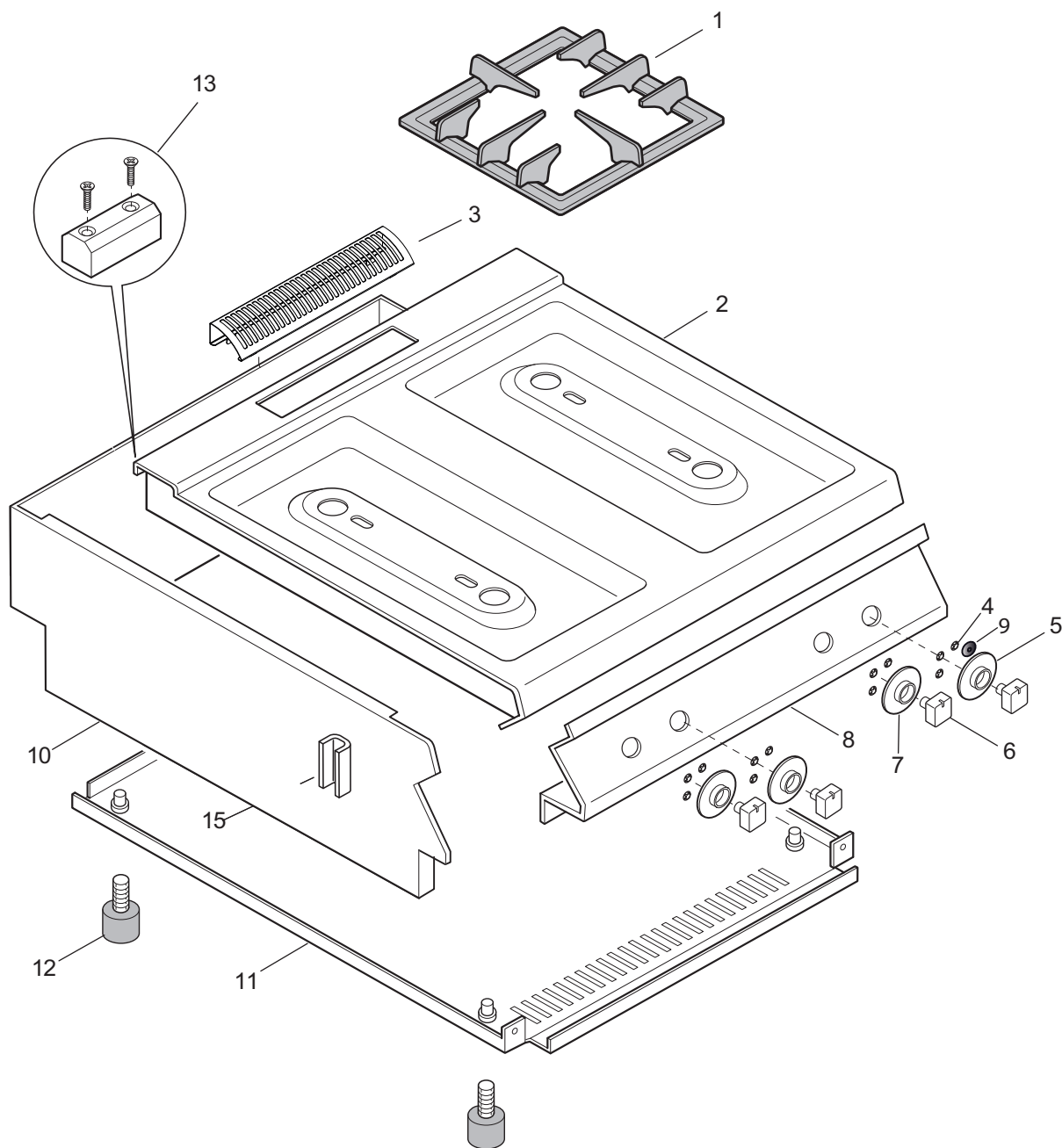


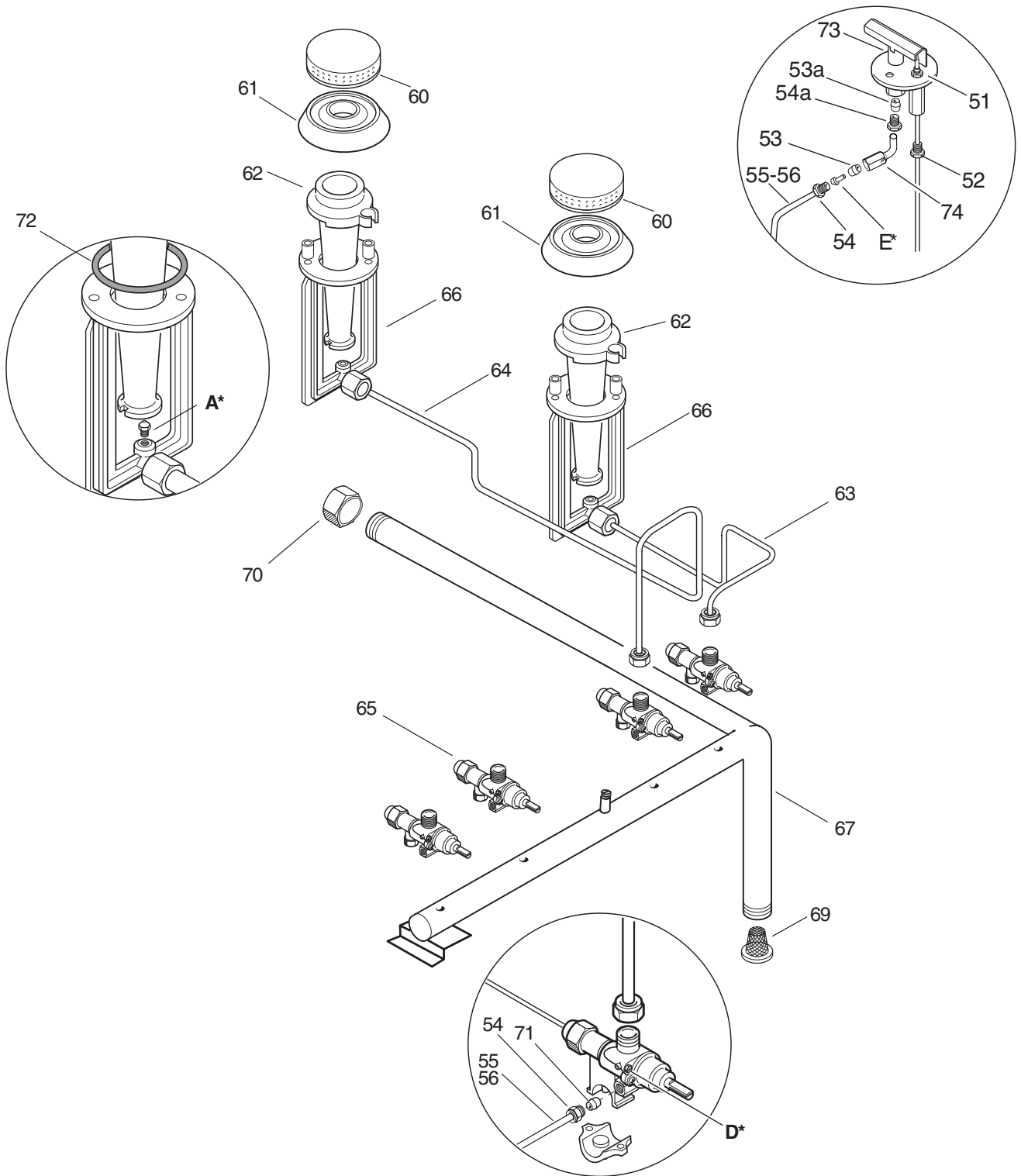
**CUCINE GAS TOP E700XP
GAS COOKING TOP E700XP**

| PNC | Model | Ref | Brand | Version | Notes |
|--------|-------------|-----|-------|---------|--------------------------------------|
| 371000 | E7GCGD2C00 | a | ELX | GAS | 2-BURNER 400 MM |
| 371001 | E7GCGH4C00 | b | ELX | GAS | 4-BURNER 800 MM |
| 371004 | E7GCGL6C00 | c | ELX | GAS | 6-BURNER 1200 MM |
| 371166 | E7GCGD2C0A | d | ELX | GAS | 2-BURNER 400 MM-AUS |
| 371167 | E7GCGH4C0A | e | ELX | GAS | 4-BURNER 800 MM-AUS |
| 371170 | E7GCGL6C0A | f | ELX | GAS | 6-BURNER 1200 MM-AUS |
| 371178 | E7GCGH4C00 | a1 | ELX | GAS | 4-BURNER GAS RANGE+OPEN BASE 800 MM |
| 371179 | E7GCGL6C00 | a2 | ELX | GAS | 6-BURNER GAS RANGE+OPEN BASE 1200 MM |
| 371400 | E7AAATAOMCI | a | ELX | GAS | 2-BURNER GAS BOILING TOP 400 MM |
| 371401 | E7AAETAOMEI | b | ELX | GAS | 4-BURNER GAS BOILING TOP 800 MM |
| 371405 | E7AAFTAOMII | c | ELX | GAS | 6-BURNER GAS BOILING TOP 1200 MM |
| 372000 | Z7GCGD2C00 | g | ZAN | GAS | 2-BURNER 400 MM |
| 372001 | Z7GCGH4C00 | h | ZAN | GAS | 4-BURNER 800 MM |
| 372004 | Z7GCGL6C00 | i | ZAN | GAS | 6-BURNER 1200 MM |
| 372146 | Z7GCGD2C0A | l | ZAN | GAS | 2-BURNER 400 MM-AUS |
| 372147 | Z7GCGH4C0A | m | ZAN | GAS | 4-BURNER 800 MM-AUS |
| 372150 | Z7GCGL6C0A | n | ZAN | GAS | 6-BURNER 1200 MM-AUS |
| 372153 | Z7GCGD2C0H | o | ZAN | GAS | 2-BURNER 400 MM-HAKVOORT |
| 372154 | Z7GCGH4C0H | p | ZAN | GAS | 4-BURNER 800 MM-HAKVOORT |
| 372156 | Z7GCGL6C0H | q | ZAN | GAS | 6-BURNER 1200MM-HAKVOORT |
| 372178 | Z7GCGH4C00 | w | ZAN | GAS | 4-BURNER GAS RANGE+OPEN BASE 800 MM |
| 372179 | Z7GCGL6C00 | a3 | ZAN | GAS | 6-BURNER GAS RANGE+OPEN BASE 1200 MM |
| 373000 | A7GCGD2C00 | r | OEM | GAS | 2-BURNER 400 MM |
| 373001 | A7GCGH4C00 | s | OEM | GAS | 4-BURNER 800 MM |
| 373004 | A7GCGL6C00 | t | OEM | GAS | 6-BURNER 1200 MM |
| 373166 | A7GCGD2C0A | z | OEM | GAS | 2-BURNER 400 MM-AUS |
| 373167 | A7GCGH4C0A | z | OEM | GAS | 4-BURNER 800 MM-AUS |
| 373170 | A7GCGL6C0A | z | OEM | GAS | 6-BURNER 1200 MM-AUS |
| 373178 | A7GCGH4C00 | x | OEM | GAS | 4-BURNER GAS RANGE+OPEN BASE 800 MM |
| 373179 | A7GCGL6C00 | a4 | OEM | GAS | 6-BURNER GAS RANGE+OPEN BASE 1200 MM |
| 373220 | A7GCGD2KC0K | u | KIP | GAS | 2-BURNER 400 MM |
| 373221 | A7GCGH4C0K | v | KIP | GAS | 4-BURNER 400 MM |

| Pag | Index | Indice | Note |
|-----|--------------------|----------------------|------|
| 2 | General components | Componenti struttura | |
| 3 | Gas components | Componenti Gas | |
| 4 | Nozzles | Tabelle ugelli | |
| 5,6 | Spare parts list | Lista ricambi | |

Brand/Marchio: All
Factory code: 9PDX





A - Ugello bruciatore / Burner nozzle ø60

| 6DGT Code | Ref. / Notes | | |
|---------------|-------------------|--------|--------------|
| 0CBAUG | ø1.15 | 3+3B/P | G30 30mbar |
| 0A2076 | ø1.10 | 3B/P | G30 37mbar |
| 0C2807 | ø1.10 | 3B/P | G30 50mbar |
| 0CBAUK | ø1.80 | 2H/2E+ | G20 20mbar |
| 0C2808 | ø1.75 | 2H | G20 25mbar |
| 0C2345 | ø1.65/1.90 | 2L | G25 25mbar |
| 0C2345 | ø1.65/1.90 | 2K | G25.3 25mbar |
| 0C2805 | ø1.75/2.10 | 2ELL | G25 20mbar |
| 0C2805 | ø1.75/2.10 | 2S | G25.1 25mbar |
| 0CBAUJ | ø3.40 | 1a | G110 8mbar |
| 0C3658 | ø3.30 | 1b | G120 8mbar |

D - Vite di minimo / Min screw ø60

| 6DGT Code | Ref./ Notes | | |
|-----------|-------------|--------|--------------|
| 002911 | n°55 | 3+3B/P | G30 30mbar |
| 002911 | n°55 | 3B/P | G30 37mbar |
| 002925 | n°50 | 3B/P | G30 50mbar |
| 002899 | n°80 | 2H/2E+ | G20 20mbar |
| 002899 | n°80 | 2H | G20 25mbar |
| 002899 | n°80 | 2L | G25 25mbar |
| 002899 | n°80 | 2K | G25.3 25mbar |
| 002899 | n°80 | 2ELL | G25 20mbar |
| 002899 | n°80 | 2S | G25.1 25mbar |
| - | adjust | 1a | G110 8mbar |
| - | adjust | 1b | G120 8mbar |

E - Pilota fuochi / Pilot nozzle open burner

| 6DGT Code | Ref./ Notes | | |
|-----------|-------------|--------|--------------|
| 054593 | n°25 | 3+3B/P | G30 30mbar |
| 054593 | n°25 | 3B/P | G30 37mbar |
| 054593 | n°25 | 3B/P | G30 50mbar |
| 053670 | n°41 | 2H/2E+ | G20 20mbar |
| 053670 | n°41 | 2H | G20 25mbar |
| 053670 | n°41 | 2L | G25 25mbar |
| 053670 | n°41 | 2K | G25.3 25mbar |
| 053670 | n°41 | 2ELL | G25 20mbar |
| 053670 | n°41 | 2S | G25.1 25mbar |
| 053669 | n°75 | 1a | G110 8mbar |
| 053669 | n°75 | 1b | G120 8mbar |

**CUCINE GAS TOP E700XP
GAS COOKING TOP E700XP**

| <i>Pos</i> | <i>Factory Code</i> | <i>Spare Part Code</i> | <i>Descrizione</i> | <i>Description</i> | <i>Ref./Note</i> |
|------------|---------------------|------------------------|-----------------------------------|-------------------------------|------------------|
| 1 | 511821400 | 0C2526 | GRIGLIA FUOCHI GHISA | GRID | |
| 2 | 87089A700 | 0C7856 | RIPIANO 400mm | TABLE TOP 400mm | ELX |
| 2 | 87089A900 | 0C7723 | RIPIANO 800mm | TABLE TOP 800mm | ELX |
| 2 | 87089AA00 | 0C7724 | RIPIANO 1200mm | TABLE TOP 1200mm | ELX |
| 2 | 87089G700 | 0C7861 | RIPIANO 400mm | TABLE TOP 400mm | ZAN |
| 2 | 87089G800 | 0C7733 | RIPIANO 800mm | TABLE TOP 800mm | ZAN |
| 2 | 87089G900 | 0C7734 | RIPIANO 1200mm | TABLE TOP 1200mm | ZAN |
| 2 | 87089G700 | 0C7861 | RIPIANO 400mm | TABLE TOP 400mm | OEM |
| 2 | 87089G800 | 0C7733 | RIPIANO 800mm | TABLE TOP 800mm | OEM |
| 2 | 87089G900 | 0C7734 | RIPIANO 1200mm | TABLE TOP 1200mm | OEM |
| 3 | 50389LM00 | 0C7705 | GRIGLIA CAMINO | GRATE FOR CHIMNEY | |
| 4 | 218912211 | 069567 | MOLLETTA PER GHIERA | SPRING, KNOB RING | |
| 5 | 548876S01 | 0C6671 | GHIERA MANOPOLA FUOCHI ANT. | KNOB RING, FRONT BURNER | ELX |
| 5 | 548879F00 | 0C7243 | GHIERA MANOPOLA FUOCHI ANT. | KNOB RING, FRONT BURNER | ZAN, OEM |
| 6 | 54887AV00 | 0C8645 | MANOPOLA PER RUBINETTO GAS | KNOB, GAS TAP | ELX |
| 6 | 548878101 | 0C7425 | MANOPOLA PER RUBINETTO GAS | KNOB, GAS TAP | ZAN |
| 6 | 548865600 | 0C1007 | MANOPOLA PER RUBINETTO GAS | KNOB, GAS TAP | OEM |
| 6 | 548865600 | 0C1007 | MANOPOLA PER RUBINETTO GAS | KNOB, GAS TAP | KIP |
| 7 | 548876T01 | 0C7332 | GHIERA MANOPOLA FUOCHI POS. | KNOB RING FOR REAR BURNER | ELX |
| 7 | 548879G00 | 0C7244 | GHIERA MANOPOLA FUOCHI POS. | KNOB RING FOR REAR BURNER | ZAN, OEM |
| 8 | 85089B102 | 0C7292 | CRUSCOTTO 400mm | CONTROL PANEL 400mm | ELX |
| 8 | 85089B202 | 0C7293 | CRUSCOTTO 800mm | CONTROL PANEL 800mm | ELX |
| 8 | 85089B602 | 0C7294 | CRUSCOTTO 1200mm | CONTROL PANEL 1200mm | ELX |
| 8 | 87089GB01 | 0C7313 | CRUSCOTTO 400mm | CONTROL PANEL 400mm | ZAN |
| 8 | 87089GC01 | 0C7314 | CRUSCOTTO 800mm | CONTROL PANEL 800mm | ZAN |
| 8 | 87089GF01 | 0C7315 | CRUSCOTTO 1200mm | CONTROL PANEL 1200mm | ZAN |
| 8 | 800838600 | * | CRUSCOTTO 400mm | CONTROL PANEL 400mm | OEM |
| 8 | 800838700 | * | CRUSCOTTO 800mm | CONTROL PANEL 800mm | OEM |
| 8 | 800838A00 | 0CB116 | CRUSCOTTO 1200mm | CONTROL PANEL 1200mm | OEM |
| 9 | 541813800 | 0C6171 | RONDELLA SILICONE | SILICONE WASHER | |
| 10 | 85089F701 | 0C8544 | RIVESTIMENTO LATERALE TOP | EXTERNAL PANEL TOP | ELX 400mm |
| 10 | 85089F801 | 0C7536 | RIVESTIMENTO LATERALE TOP | EXTERNAL PANEL TOP | ELX 800mm |
| 10 | 85089F901 | 0CA725 | RIVESTIMENTO LATERALE TOP | EXTERNAL PANEL TOP | ELX 1200mm |
| 10 | 85089FA01 | 0C7268 | RIVESTIMENTO LATERALE TOP | EXTERNAL PANEL TOP | ZAN, OEM 400mm |
| 10 | 85089FB01 | 0C8464 | RIVESTIMENTO LATERALE TOP | EXTERNAL PANEL TOP | ZAN, OEM 800mm |
| 10 | 85089FC01 | 0C7392 | RIVESTIMENTO LATERALE TOP | EXTERNAL PANEL TOP | ZAN, OEM 1200mm |
| 10 | 85089FF01 | 0C8598 | RIVESTIMENTO LATERALE + OPEN BASE | EXTERNAL PANEL+ OPEN BASE | ELX 800mm |
| 10 | 85089FG01 | * | RIVESTIMENTO LATERALE + OPEN BASE | EXTERNAL PANEL+ OPEN BASE | ELX 1200mm |
| 10 | 85089FJ01 | 0CA950 | RIVESTIMENTO LATERALE + OPEN BASE | EXTERNAL PANEL+ OPEN BASE | ZAN, OEM 800mm |
| 10 | 85089FK01 | * | RIVESTIMENTO LATERALE + OPEN BASE | EXTERNAL PANEL+ OPEN BASE | ZAN, OEM 1200mm |
| 11 | 5038A1X02 | 0CA660 | FONDO CUCINA GAS 400mm | BOTTOM PANEL 400mm | |
| 11 | 5038A1W01 | 0TTB9W | FONDO CUCINA GAS 800mm | BOTTOM PANEL 800mm | |
| 11 | 50389WD00 | 0C7391 | FONDO CUCINA GAS 1200mm | BOTTOM PANEL 1200mm | |
| 11 | 532824700 | * | FONDO VANO 800mm | BOTTOM PANEL OPEN BASE 800mm | |
| 11 | 532824800 | * | FONDO VANO 1200mm | BOTTOM PANEL OPEN BASE 1200mm | |
| 12 | 315252601 | 026806 | PIEDINO CON VITE | SCREW FOOT, TOP APPLIANCE | |
| 13 | 516860702 | 0C0137 | PIASTRINA PER GIUNZIONE | JOINTING REAR PLATE | |
| 15 | 527850500 | 0C0156 | PIASTRA FISSAGGIO FIANCHI | SIDE PANELS JOINTING PLATE | |
| 51 | 831800500 | 0C0202 | TERMOCOPPIA | THERMOCOUPLE | |
| 52 | 214162000 | 0C0121 | RACCORDO FISS. TERMOCOPPIA | CONNECTION, FIX THERMOCOUPLE | |
| 53 | 515827401 | 053665 | BICONO PER PILOTA D.4 | DOUBLE CONE D.4 FOR PILOT | |
| 53a | 516888200 | 0C3645 | BICONO PER PILOTA D.4 | DOUBLE CONE D.4 FOR PILOT | |

**CUCINE GAS TOP E700XP
GAS COOKING TOP E700XP**

| <i>Pos</i> | <i>Factory Code</i> | <i>Spare Part Code</i> | <i>Descrizione</i> | <i>Description</i> | <i>Ref./Note</i> |
|------------|---------------------|------------------------|------------------------------|------------------------------|------------------|
| 54 | 214164400 | 052125 | RACCORDO | NUT | |
| 54a | 516887500 | 0C3646 | RACCORDO | CONNECTION | |
| 55 | 51589BJ00 | 0C9553 | CONDUTTURA ANT.PILOTA | FRONTAL PILOT PIPE | |
| 56 | 51589BH00 | 0C9552 | CONDUTTURA POST.PILOTA | REAR PILOT PIPE | |
| 60 | 510819501 | 0C0129 | SPARTIFIAMMA DIAM.60 | FLAME SPREADER DIAM.60 | |
| 61 | 510819303 | 0C0127 | BRUCIATORE DIAM.60 | BURNER DIAM.60 | |
| 62 | 510819103 | 0C0125 | VENTURI X BRUC. DIAM.60 | VENTURI DIAM.60 | |
| 63 | 835868102 | 0C2799 | CONDUTTURA ANT.FUOCHI | FRONTAL BURNER PIPE | |
| 64 | 835868202 | 0C2800 | CONDUTTURA POST.FUOCHI | REAR BURNER PIPE | |
| 65 | 835857202 | 0C0205 | RUBINETTO GAS CON BRIGLIA | GAS TAP WITH BRIDLE | |
| 66 | 510819004 | 0C0124 | SUPPORTO VENTURI | HOLDER FOR VENTURI | |
| 67 | 853896200 | 0C2824 | RIBALTA TOP 400mm | TOP MANIFOLD 400mm | |
| 67 | 853896300 | 0C2825 | RIBALTA TOP 800mm | TOP MANIFOLD 800mm | |
| 67 | 853896400 | 0C7855 | RIBALTA TOP 1200mm | TOP MANIFOLD 1200mm | |
| 67 | 83089GW00 | 0C7827 | RIBALTA SU VANO 800mm | MANIFOLD ON OPEN BASE 800mm | |
| 67 | 83089GX00 | 0C7828 | RIBALTA SU VANO 1200mm | MANIFOLD ON OPEN BASE 1200mm | |
| 69 | 516863900 | 0C0140 | FILTRO GAS | GAS FILTER | |
| 70 | 246519800 | 0C2356 | TAPPO PER RIBALTA | MANIFOLD STOPPER | |
| 71 | 215199700 | 052127 | BICONO | DOUBLE CONE | |
| 72 | 543829700 | 0C0188 | GUARNIZIONE OR | O-RING GASKET | |
| 73 | 806854300 | 0C3644 | PILOTA FUOCHI | PILOT BURNER | |
| 74 | 510823900 | 0C3643 | SUPPORTO CURVO UGELLO PILOTA | CURVED JET HOLDER | |

Finanzen/Service

28307 Bremen
Thalenhorststraße 15
Tel.+49 421 48557-0
Fax+49 421 488650
bremen@nordcap.de

Vertrieb Ost

12681 Berlin
Wolfener Straße 32/34, Haus K
Tel.+49 30 936684-0
Fax+49 30 936684-44
berlin@nordcap.de

Vertrieb West

40699 Erkrath
Max-Planck-Straße 30
Tel.+49 211 540054-0
Fax+49 211 540054-54
erkrath@nordcap.de

Vertrieb Nord

21079 Hamburg
Großmoorbogen 5
Tel.+49 40 766183-0
Fax+49 40 770799
hamburg@nordcap.de

Vertrieb Süd

55218 Ingelheim
Hermann-Bopp-Straße 4
Tel.+49 6132 7101-0
Fax+49 6132 7101-20
ingelheim@nordcap.de



www.nordcap.de