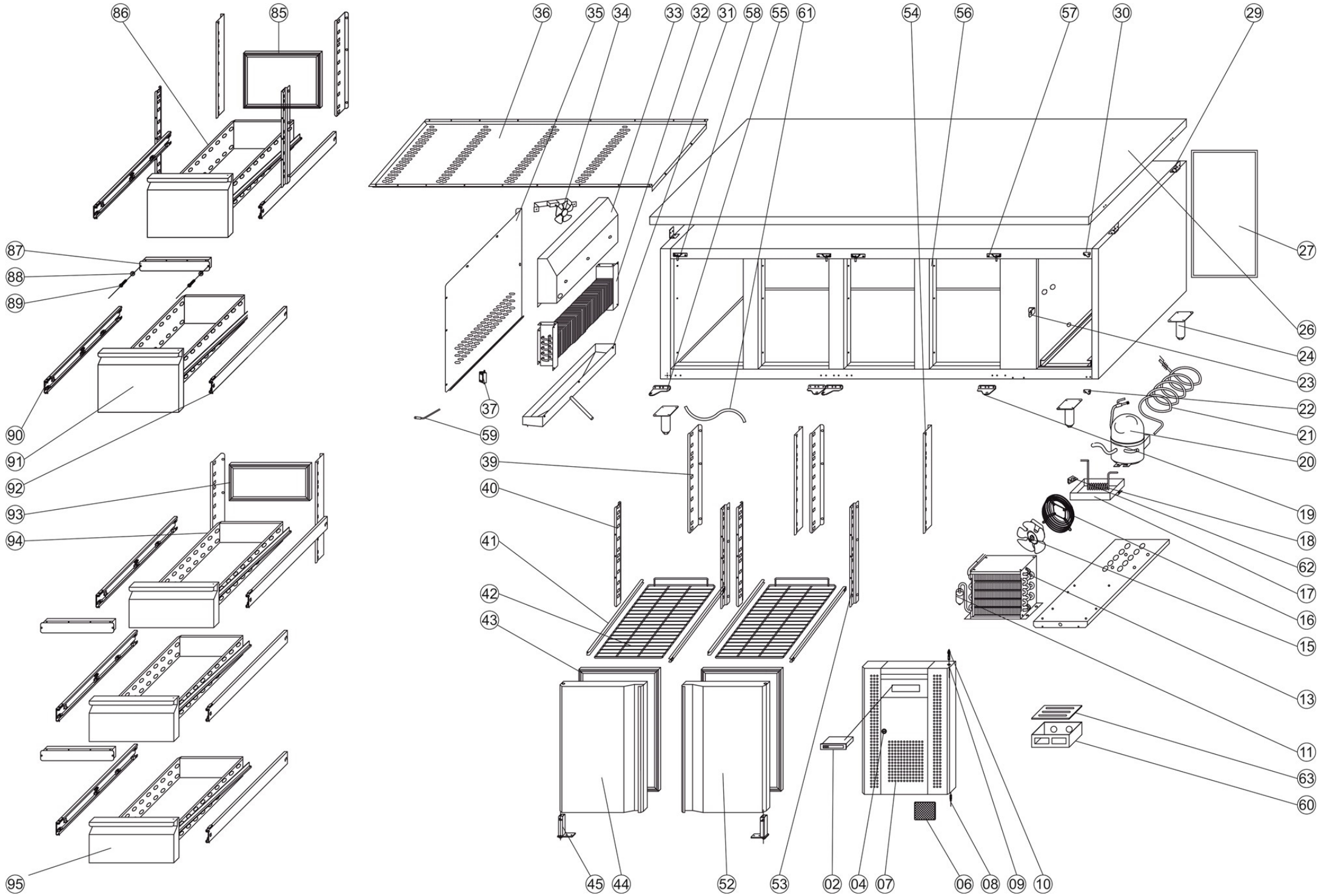


Ersatzteilliste-Explosionszeichnung

COOL-LINE-Kühltisch KTM 4 - 2T 4Z GN 1/1

[Art. 435106340]





Position	ItemNo	Description	
02	31397	Thermostat XW20LRH	
04	10725	Lock With Keys	
06	10021	Filter 175x228	
07	32022	Front Panel 2020	
08	12824	Down Hinge Axis	
09	12780	Bushing	
10	12908	Nut For Upper Hinge	
11	15723	Filter Drier 20 G	
13	14181	Condenser From 2016	
15	13384	Condensor Fan BD01-01/170	
16	13309	Basket Guard Grills	
17	11569	Water Box	
18	14220	Evaporate Pipe	
19	12835	Down Hinge Right	
20	11728	Compressor HPKD190A R600	
21	14546	Suction Pipe	
22	12754	Bottom Hinge For Front Panel	
23	10705	Lock Hook	
24	14601	Leg 115-170 mm (4 Pcs)	
25	32450	LED Light	
26	11405	Top -Sp. Back 2016	
	11411	Top With Sp. Back 2016	
27	11335	Ventilation Grill Back	
28	12780	Bushing	
29	10911	Bracket For Topplate	
30	12967	Top Hinge Front Panel	
31	11536	Evaporator Water Pan	
32	14339	Evaporator 440x94x269 mm	
33	13459	Evaporator Fan Support	
34	13421	Evaporator Fan 2018	
35	14417	Evaporator Cover	
36	10381	Internal Air Counductor	
37	32023	Sensor Clip For CK-I	
39	12437	Back Rail Left	
40	12480	Front Rail Left	
41	12514	Guides (Set) 550x20x20	
42	15055	Shelf 335 x 530	
43	12622	Gasket 388 x 598 mm	
44	11886	Counter Glass Door Left	
	31398	Door Left 2020	
45	12937	Spring Hinge	
52	11887	Counter Glass Door Right	
	31399	Door Right 2020	
53	12482	Front Rail Right	
54	12439	Back Rail Right	
55	12829	Down Hinge Left	
56	10436	Door Post	
57	12989	Top Hinge Right 2016	
58	12976	Top Hinge Left 2016	

59	13896	Probe NTC Dixell/Carel 10 Kohm	
60	32024	Thermostat Box For CK-I	
61	32026	Drain Pipe For CK-I	
62	32027	Drain Pipe Clip For CK-I	
63	32025	Thermostat Box Cover For CK-I	
85	12617	Gasket 2 Drawer, CK	
86	12459	Drawer Body 220 mm	
87	12447	Bridge 70 mm	
88	10130	Washer M4 S/S	
89	10097	Screw M4 S/S	
90	12498	Guide Left	
91	12466	Front 2 Drawers, CK	
92	12504	Guide Right	
93	12621	Gasket 3 Drawer, CK	
94	12458	Drawer Body 145 mm	
95	12469	Front 3 Drawer, CK	

Finanzen/Service
28307 Bremen
Thalenhorststraße 15
Tel.+49 421 48557-0
Fax+49 421 488650
bremen@nordcap.de

Vertrieb Ost
12681 Berlin
Wolfener Straße 32/34, Haus K
Tel.+49 30 936684-0
Fax+49 30 936684-44
berlin@nordcap.de

Vertrieb West
40699 Erkrath
Max-Planck-Straße 30
Tel.+49 211 540054-0
Fax+49 211 540054-54
erkrath@nordcap.de

Vertrieb Nord
21079 Hamburg
Großmoorbogen 5
Tel.+49 40 766183-0
Fax+49 40 770799
hamburg@nordcap.de

Vertrieb Süd
55218 Ingelheim
Hermann-Bopp-Straße 4
Tel.+49 6132 7101-0
Fax+49 6132 7101-20
ingelheim@nordcap.de



www.nordcap.de