

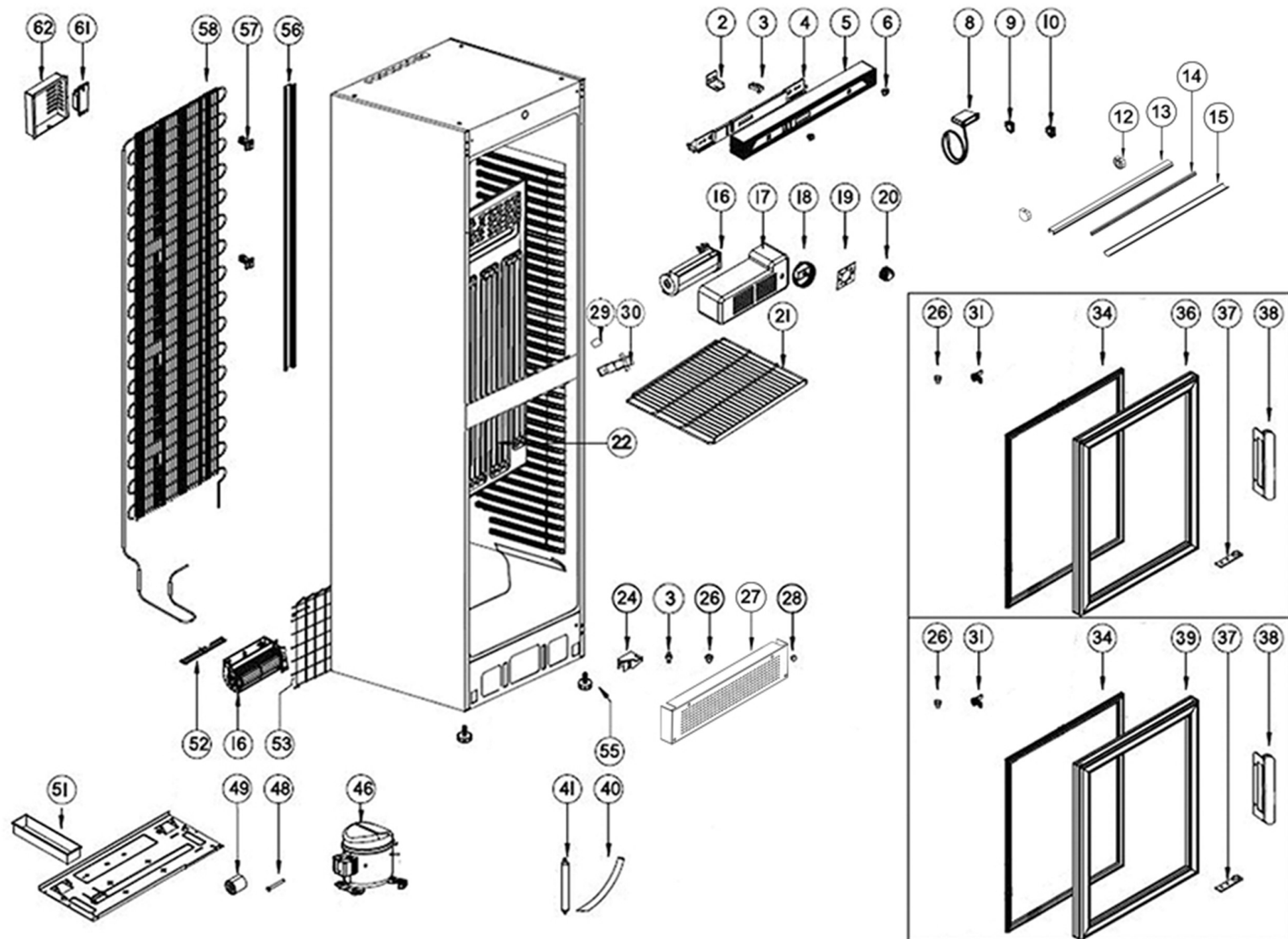
Ersatzteilliste-Explosionszeichnung

Gewerbekühlschrank **KU 380 2G**

[Art. 435113809]



2022-07



15894 / FS2380

| Position | ItemNo | Description |
|----------|--------|--------------------------------|
| 02 | 12961 | Top Hinge Base Left/Right |
| 03 | 12911 | Pin For Hinge |
| 04 | 13813 | Control Panel 2015 Black |
| 05 | 10948 | Cover For Control Panel 2015 B |
| 06 | 13824 | Control Panel Cover For Screw |
| 08 | 13790 | Thermometer Analog Black 1.2M |
| 09 | 13737 | Light Switch |
| 10 | 13644 | Green Control Lamp |
| 12 | 15510 | End Cap LED Light |
| 13 | 15597 | LED Light Base |
| 14 | 15592 | LED Light 410 mm |
| 15 | 15600 | LED Light Cover |
| 16 | 13531 | Fan Motor Int/Ext |
| 17 | 13390 | Cover For Internal Fan |
| 18 | 13998 | Thermostat K50B-S16176 R600 |
| 19 | 14048 | Thermostat Scale Label White |
| 20 | 14023 | Thermostat Knob FS |
| 21 | 15151 | Standard Shelf 498 x 405 mm |
| 22 | 14488 | Roll Bond Evaporator White |
| 24 | 12732 | Bottom Hinge |
| 26 | 12863 | Hinge Bush |
| 27 | 10859 | Bottom Panel Hexagonal |
| 28 | 11243 | Cover For Screw |
| 29 | 13824 | Control Panel Cover For Screw |
| 30 | 12906 | Middle Hinge Black |
| 31 | 10721 | Lock With Keys |
| 34 | 12068 | Door Gasket White |
| 36 | 12433 | Upper Door Alu Frame |
| 37 | 12808 | Door Hinge Bracket |
| 38 | 12665 | Handle |
| 39 | 11878 | Bottom Door Alu Frame |
| 40 | 11442 | Drain Pipe |
| 41 | 15721 | Filter Drier 20 G |
| 46 | 11727 | Compressor HMK12AA R600 |
| 48 | 14614 | Pin For Big Roller |
| 49 | 14608 | Big Roller |
| 51 | 11470 | Drip Tray |
| 52 | 11123 | Grill Cover For Fan Motor |
| 53 | 11121 | Grill Cover For Comp. Compart. |
| 55 | 14570 | Adjustable Screw Foot |
| 56 | 13632 | Cover For Wiring |
| 57 | 14199 | Holder For Condenser 2015 |
| 58 | 14079 | Condenser |
| 61 | 15631 | LED Power Supply 12V 18W |
| 62 | 15347 | Cover For Ballast |

2022-07-06

Finanzen/Service
28307 Bremen
Thalendorststraße 15
Tel.+49 421 48557-0
Fax+49 421 488650
bremen@nordcap.de

Vertrieb Ost
12681 Berlin
Wolfener Straße 32/34, Haus K
Tel.+49 30 936684-0
Fax+49 30 936684-44
berlin@nordcap.de

Vertrieb West
40699 Erkrath
Max-Planck-Straße 30
Tel.+49 211 540054-0
Fax+49 211 540054-54
erkrath@nordcap.de

Vertrieb Nord
21079 Hamburg
Großmoorbogen 5
Tel.+49 40 766183-0
Fax+49 40 770799
hamburg@nordcap.de

Vertrieb Süd
55218 Ingelheim
Hermann-Bopp-Straße 4
Tel.+49 6132 7101-0
Fax+49 6132 7101-20
ingelheim@nordcap.de



www.nordcap.de