

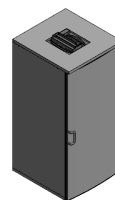
# Ersatzteilliste-Explosionszeichnung

## COOL-LINE-Minikühlzelle MZ 2000

[Art. 46710404002-0-0-0]




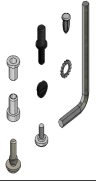
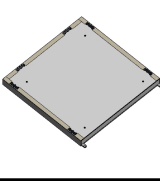
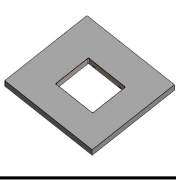




Art. Code: 10404002-0-0-0



Mini Cold Room (Chiller) V4-2000  
 Mini Chambre Froide (Refrigeration) V4-2000  
 Armário Stock V4-2000  
 Mini Cella Frigorifera (TN) V4-2000  
 Minikühlzelle (Kühl) V4-2000  
 Mini Cámara Frigorífica (Refrigeración) V4-2000

Code	Description	
41801157	Magnetic gasket 1901 x 896 Joint magnétique 1901 x 896 Vedantes 1901 x 896 cinza - Nova feira Guarnizione magnetica 1901 x 896 Magnetdichtung 1901 x 896 Burlate magnético 1901 x 896	
42601021	Perfil da Porta Cinza - Cor 4FR Perfil da Porta Cinza - Cor 4FR	
42601047	Deflector grid V4 Grille déflectrice V4 Grelha Deflectora V4 Griglia deflettrice V4 Ablenkitter V4 Rejilla deflector V4	
42601066	Floor covers Cache-pieds V1 Taco para Pés V1 Cappucci del pavimento Abdeckungen für Paneelboden Tapa furos del suelo	
42601068	Screw cap for 6 mm hexagonal hole Cache pour trou à six pans 6 mm Taco Cinza p/ Furo Sextavado de 6 mm Cappucci per perforazione ad esagono di 6 mm Kunststoffstopfen für Bohrung mit 6 mm Sechskant Tapone para perforación hezagonal de 6 mm	
45903001	Hex key 6 mm Clé Allen 6 mm Chave Umbrako 6 mm Chiave di brugola 6 mm Innensechskantschlüssel 6 mm Llave Allen 6 mm	
45904016	Stainless steel shelf Grille inox Grelha Trav. Redondas do Armário - V4 (61404045) Griglia acciaio CNS Tragrost Rejilla inox	
45907001	Lower stainless steel stud screw diam.15 x 27 mm Boulon inférieur en acier inox diam.15 x 27 mm Perno Inferior Inox diam.15 x 27 mm Perno inferiore in acciaio inox diam.15 x 27 mm Unterer Bolzen aus Edelstahl diam.15 x 27 mm Perno inferior en acero inoxidable diam.15 x 27 mm	
45907009	Stud screw for shelf post Boulon du montant de la grille V4 Perno Fixação Montante V4 Perno del montante verticale della griglia Bolzen der Auflageschiene für Tragrost Perno del montante vertical de la rejilla	

45907011	Upper galvanized bolt diam.11,5 x 32 mm Boulon supérieur galvanisé diam.11,5 x 32 mm Perno Superior V4 Zinc. diam.11,5 x 32 mm Perno superiore zincato diam.11,5 x 32 mm Oberer verzinkter Bolzen aus Edelstahl diam.11,5 x 32 mm Perno superior galvanizado diam.11,5 x 32 mm	
61404024	Shelf post Montant de la grille Montante da Grelha - V4 Montante verticale della griglia Auflageschiene für Tragrost Montante vertical de la rejilla	
61404035	Back panel Panneau arrière Painel das Costas Armário 2000 (V4-C02) Pannello posteriore Rückwandpaneel Panel posterior	
61404086	Ironmongery set Ensemble de quincaillerie Conjunto de Ferragens Armário - V4 Set di ferramenta Eisenwaren Einsatz Conjunto de ferrería	
61404126	Floor panel Panneau de sol Painel do Fundo Armário - V4 (V4-F01) Pannello pavimento Paneelboden Panel de suelo	
61404138	Ceiling panel Panneau de plafond Painel do Tampo do Armário - V4 (V4-T01) Pannello di soffitto Deckenpaneel Panel de techo	
61404142	Side panel Panneau latéral Painel Lateral Armário 2000 (V4-L02) Pannello laterale Seitenwandpaneel Panel lateral	
61404257	Door for V4-2000 (V4-P2) Porte Porta do Armário 2000 (V4-P2) Porta Tür Puerta	

NordCap GmbH & Co. KG  
Thalendorststraße 15  
28307 Bremen  
Hauptsitz (Service, Finanzen & Personal, Lager, IT, Marketing)

Telefon: +49 421 48557-0  
Telefax: +49 421 488650  
E-Mail: [bremen@nordcap.de](mailto:bremen@nordcap.de)

Die NordCap Verkaufsniederlassungen in Deutschland:

Nord: Hamburg • Ost: Berlin • Süd: Ingelheim • West: Erkrath

