

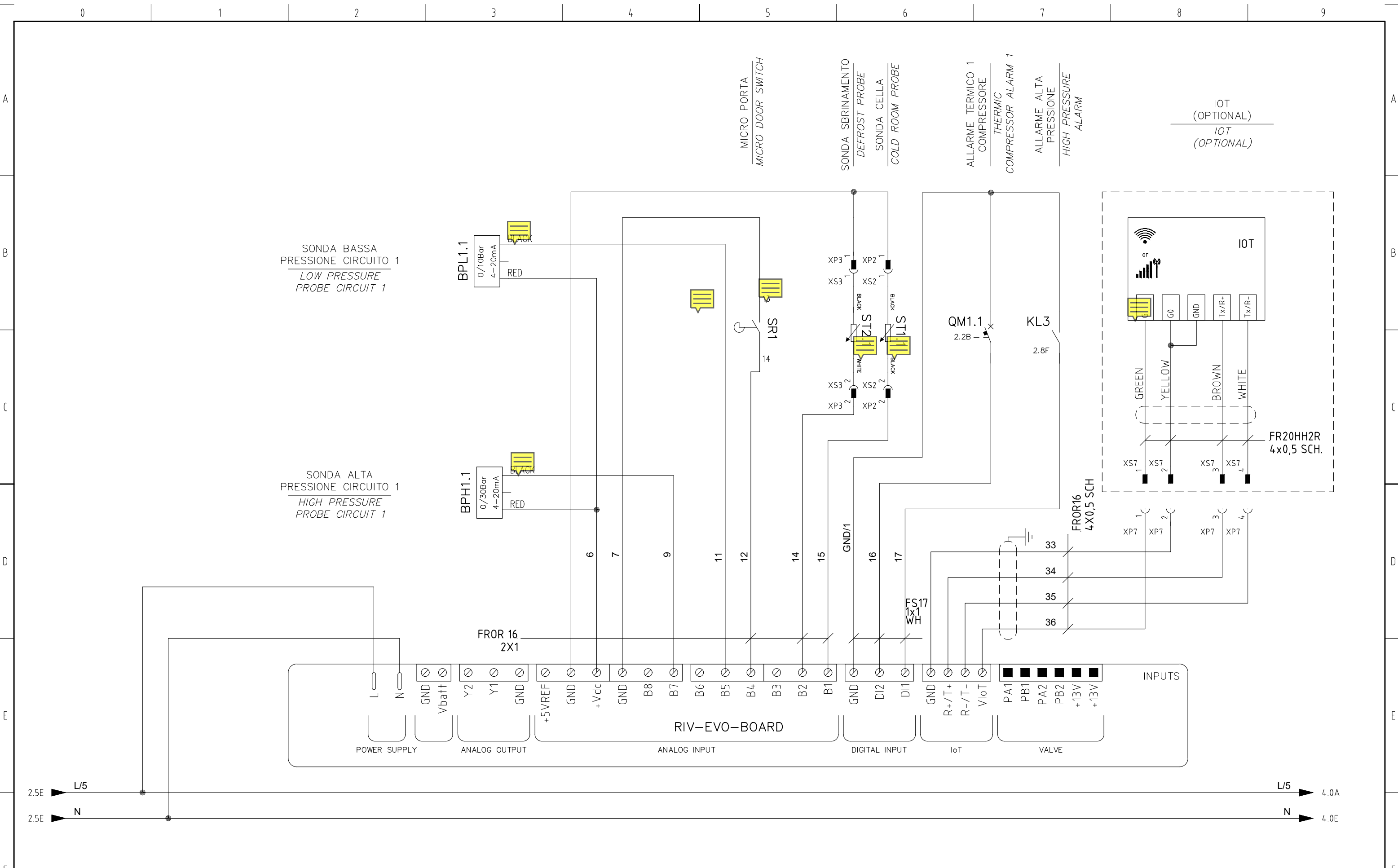
# RIVACOLD

## MASTERING COLD

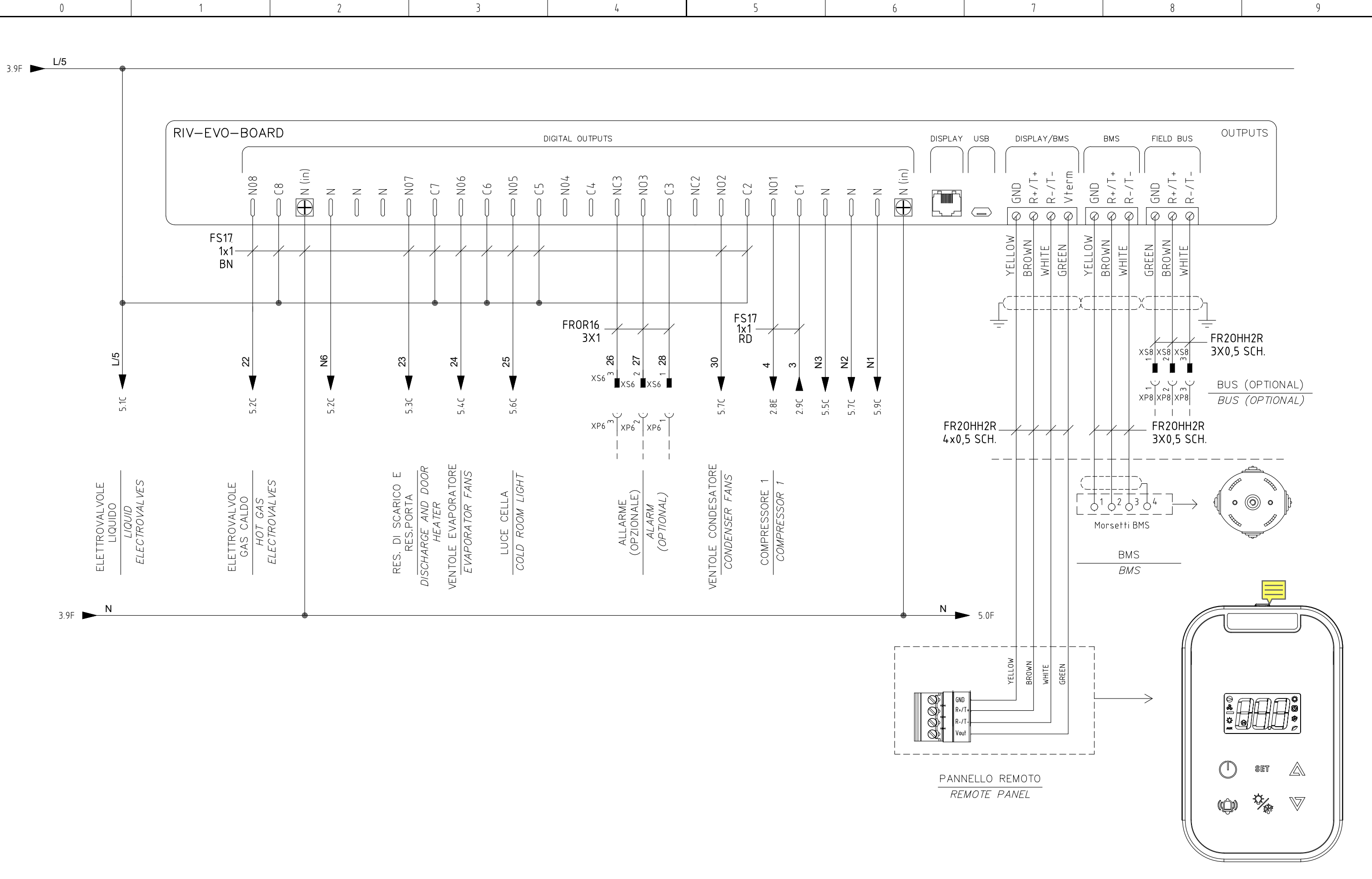
—	NORMA: NORM:	CE	CEI EN 60204-1
CORRENTE MASSIMA: MAXIMUM CURRENT:	—	TENSIONE ESERCIZIO: POWER SUPPLY:	400V / 3F~ / 50Hz / ±10%
CORRENTE ASSORBITA ALLE CONDIZIONI DI LAVORO:	—	TENSIONE CIRCUITI AUSILIARI: AUXILIARY CIRCUITS VOLTAGE:	230V
CURRENT CONSUMPTION AT WORKING POINT:	—	TENSIONE CONTROLLO ELETTRONICO: ELECTRONIC CONTROL POWER SUPPLY:	230V
POTENZA ASSORBITA ALLE CONDIZIONI DI LAVORO:	—		
POWER CONSUMPTION AT WORKING POINT:	—		
TN – BT	CORRENTE CORTO CIRCUITO: SHORT CIRCUIT CURRENT:	I <sub>cc</sub> 10kA	CODICE MACCHINA: MACHINE CODE: —
R290	NORMA RIF: NORM REF:	CEI EN 60947-2	CODICE QUADRO ELETTRICO: ELECTRICAL BOARD CODE: 5603-0606

02	DISTINTA MATERIALI	22/05/23	GIANNOT	DISEGN.	GIANNOTTI	DATA	09/09/22		BECM1301xAxxP11 1X300 1 COMP.	EBC11L02000P	= +
01	CONN.SONDE TEMP.	26/09/22	GIANNOT	VISTO							
REV.	MODIFICA	DATA	FIRMA	APPR.	GIUNTA	SOST. IL :	SOST. DA :	FILE : EBC11L02000P.dwg	COPERTINA COVER	5603-0606	FG. 1 8 F.S. 2





02	DISTINTA MATERIALI	22/05/23	GIANNOT	DATA	09/09/22		<b>BECM1301xAxxP11</b> 1X300 1 COMP.	<b>EBC11L02000P</b>	= +
01	CONN.SONDE TEMP.	26/09/22	GIANNOT	DISEGN.	GIANNOTTI				
REV.	MODIFICA	DATA	FIRMA	APPR.	GIUNTA	SOST. IL :	SOST. DA :	FILE : EBC11L02000P.dwg	INPUTS STRUMENTO ELETTRONICO ELECTRONIC INSTRUMENT INPUTS
0		1		2		3	4	5	6
									5603-0606 FG. 3 8 F.S. 4



02	DISTINTA MATERIALI	22/05/23	GIANNOT	DATA	09/09/22
01	CONN.SONDE TEMP.	26/09/22	GIANNOT	DISEGN.	GIANNOTTI
REV.	MODIFICA	DATA	FIRMA	APPR.	GIUNTA

SOST. IL :	SOST. DA :
------------	------------

**RIVACOLD**  
MASTERING-COLD

FILE : EBC11L02000P.dwg

BECEM1301xAxxP11  
1X300 1 COMP.

OUTPUTS STRUMENTO ELETTRONICO  
ELECTRONIC INSTRUMENT OUTPUTS

EBC11L02000P	=	
5603-0606	+	
		FG. 4 8
		F.S. 5

ELETTROVALVOLA  
LIQUIDO 1  
LIQUID  
ELECTROVALVE 1

ELETTROVALVOLA  
GAS CALDO 1  
HOT GAS  
ELECTROVALVE 1

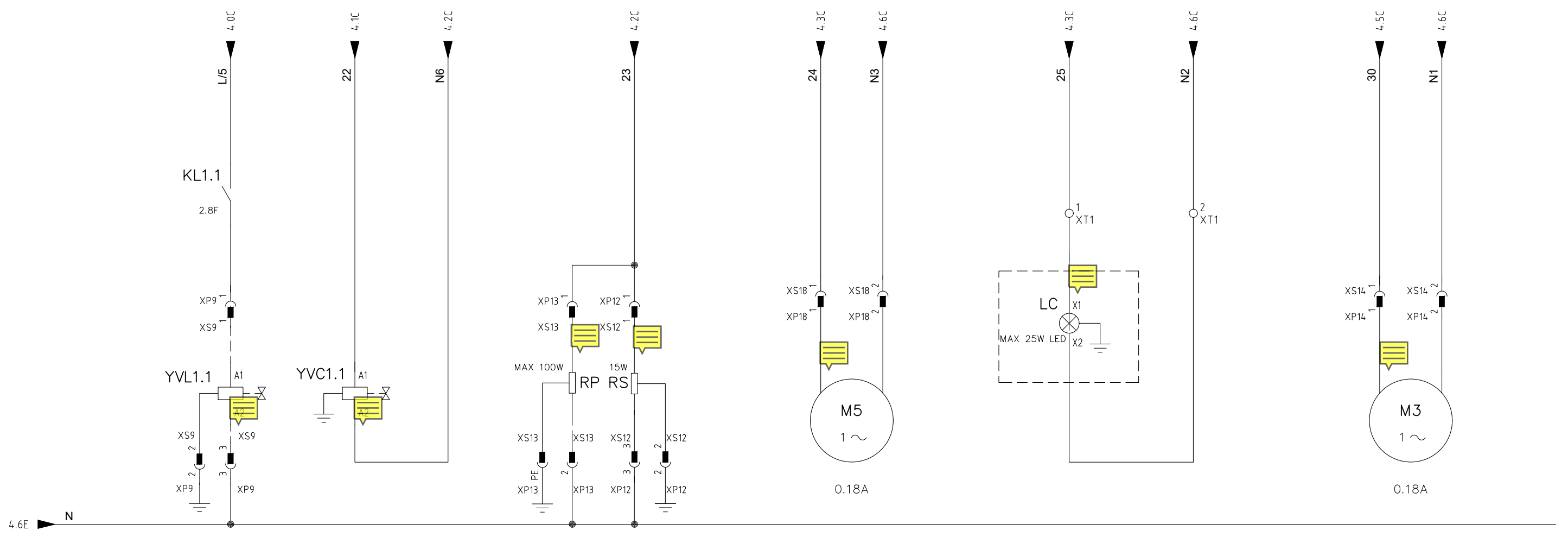
RESISTENZA PORTA  
DOOR  
HEATER

RESISTENZA SCARICO  
DISCHARGE  
HEATER

VENTOLA EVAPORATORE 1  
EVAPORATOR  
FAN 1

LUCE CELLA  
COLD  
ROOM  
LIGHT

VENTOLA CONDESATORE 1  
CONDENSER  
FAN 1



02	DISTINTA MATERIALI	22/05/23	GIANNOT	DATA	09/09/22
01	CONN.SONDE TEMP.	26/09/22	GIANNOT	DISEGN.	GIANNOTTI
REV.	MODIFICA	DATA	FIRMA	APPR.	GIUNTA

SOST. IL :                      SOST. DA :

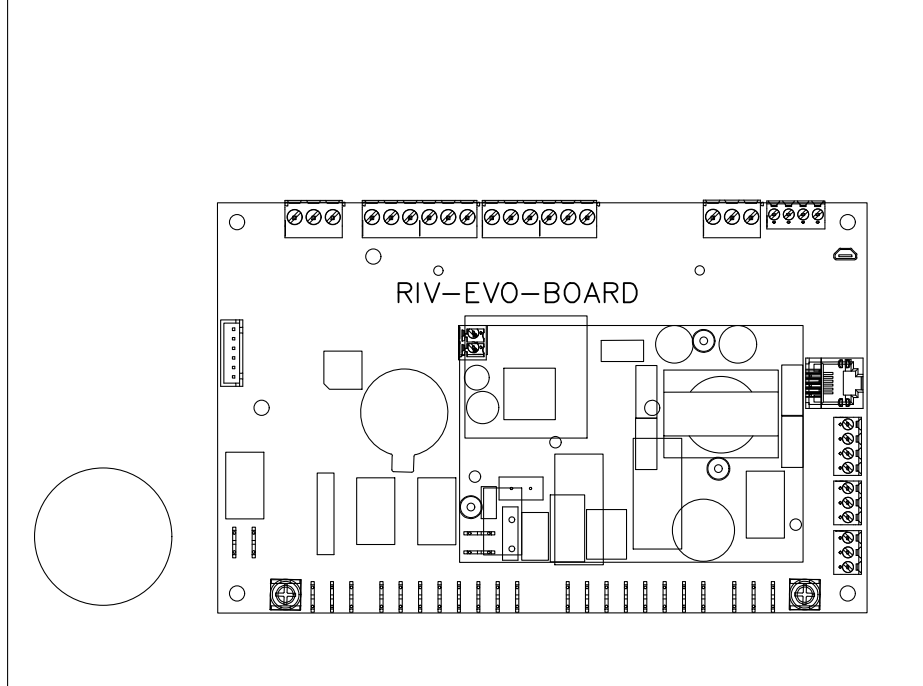


FILE : EBC11L02000P.dwg

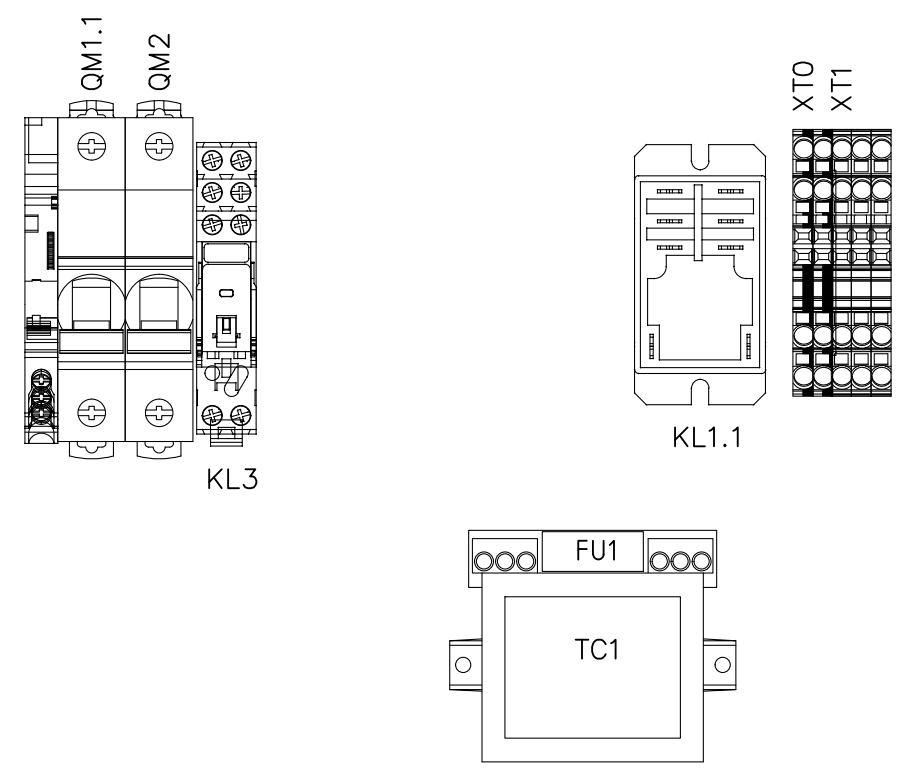
BECM1301xAxxP11  
1X300 1 COMP.  
OUTPUTS STRUMENTO ELETTRONICO  
ELECTRONIC INSTRUMENT OUTPUTS

EBC11L02000P	=
5603-0606	+
	FG. 5 8
	F.S. 6





25 x 80



FONDO QUADRO 240x400  
SCALA 1:2

				DATA	09/09/22
02	DISTINTA MATERIALI	22/05/23	GIANNOT	DISEGN.	GIANNOTTI
01	CONN.SONDE TEMP.	26/09/22	GIANNOT	VISTO	
REV.	MODIFICA	DATA	FIRMA	APPR.	GIUNTA

SOST. IL : SOST. DA :



FILE : EBC11L02000P.dwg

BECM1301xAxxP11  
1X300 1 COMP.

LAYOUT INTERNO  
INTERNAL LAYOUT

EBC11L02000P

5603-0606

FG. 7 8  
F.S. 8

Nome/Item	Quadro/Board	Tipo/Type	Descrizione IT (Db)	Descrizione EN (Db)	Costruttore/Marke	Fg/Sh	Q.ta/Q.ty	Codice Interno (Db)
BPH1.1	=QG =QG	280-633 YCQC01H101 YQCB02-013051	MORSETTO 4 CONDUTTORI CAGE-CLAMP 2.5mmq SONDA PRESSIONE 0/10Bar 4-20mA CAVO 3 FILI IPXX 1,5M SONDA SANHUA YCQC	TERMINAL 4 WIRES CAGE-CLAMP 2.5mmq PRESSURE PROBE 0/10Bar 4-20mA 3 WIRE CABLE IPXX 1,5M SANHUA PROBE YCQC	Wago SANHUA SANHUA	3 1 1	3 1 1	99102051 YCQC01H101 YQCB02-013051
BPL1.1	=QG	YCQC01H101 YQCB02-013051	SONDA PRESSIONE 0/10Bar 4-20mA CAVO 3 FILI IPXX 1,5M SONDA SANHUA YCQC	PRESSURE PROBE 0/10Bar 4-20mA 3 WIRE CABLE IPXX 1,5M SANHUA PROBE YCQC	SANHUA SANHUA	3 1	1 1	YCQC01H101 YQCB02-013051
FU1	=QG	FUSIBILE	FUSIBILE INTERNO TRASFORMATORE	FUSE INSIDE TRANSFORMER	Rivacold	2	1	
IOT	=QG	GTW000MGPO	GATEWAY CLOUDGATE MIDDLE-END 2G 24V		Carel	3	1	7899-0031
KL1.1	=QG	RPF2BP7	RELE' 2/S 230V-30A 230V/1/50-60Hz	RELAY 2/S 230V-30A 230V/1/50-60Hz	Schneider	2	1	99107038
KL3	=QG	RXG21P7 RGZE1S48M RSZL300	RELE' 2/S 230V-5A 230V/1/50-60Hz ZOCICOLO 2/SC MINI ETICHETTA X ZOCICOLO RXG SCHNEIDER	RELAY 2/S 230V-5A 230V/1/50-60Hz RELAY SUPPORT 2/SC LABEL FOR SUPPORT RXG SCHNEIDER	Schneider Schneider Schneider	2 1 1	1 1 1	99107039 99107040 99107041
LC	=QG	ELx	LUCE CELLA	COLD ROOM LIGHT	Rivacold	5	1	
M1.1	=QG	COMPRESSORE	COMPRESSORE	COMPRESSOR	Rivacold	2	1	
M3	=QG	VENTOLA COND	VENTOLA CONDENSATORE	CONDENSER FAN	Rivacold	5	1	
M5	=QG	VENTOLA EV.	VENTOLA EVAPORATORE	EVAPORATOR FAN	Rivacold	5	1	
Morsetti BMS	=QG	280-633	MORSETTO 4 CONDUTTORI CAGE-CLAMP 2.5mmq	TERMINAL 4 WIRES CAGE-CLAMP 2.5mmq	Wago		1	99102051
PSH1.1	=QG	PSH	PRESSOSTATO ALTA GENERALE	MAIN HIGH PRESSURE SWITCH	Rivacold	2	1	
QM1.1	=QG	M9A26924 M9F12110	CONTATTO LATERALE NO+NC MAGNETOTERMICO 1P 10A D	LATERAL CONTACT NO-NC MAGNETOTHERMAL 1P 10A D	Schneider Schneider	2 1	1 1	99107036 99107035
QM2	=QG	M9F11104	MAGNETOTERMICO 1P 4A C	MAGNETOTHERMAL 1P 4A C	Schneider	2	1	99107037
RIV-EVO-BOARD	=QG	UP3ARI52RSCS1	SCHEDA ELETTRONICA EVOLUTION	ELECTRONIC BOARD EVOLUTION	Carel	3	1	RIV-EVO-BOARD
RP	=QG	RP	RESISTENZA PORTA	DOOR HEATER	Rivacold	5	1	
RS	=QG	RS	RESISTENZA DI SCARICO	DISCHARGE HEATER	Rivacold	5	1	
SR1	=QG	SR1	MICRO PORTA	DOOR MICRO	Rivacold	3	1	
ST1.1	=QG	103AT11/15#	SONDA DI TEMPERATURA	TEMPERATURE PROBE	Rivacold componenti_IEC	3	2	7219-0013
ST2.1	=QG	AX0324	SONDA DI TEMPERATURA	TEMPERATURE PROBE	Rivacold componenti_IEC	3	1	7219-0018
TC1	=QG	438RIC2370	TRASFORMATORE 15.5VA 230V/230V C/FUS	TRANSFORMATOR 15.5VA 230V/230V C/FUS	Taddei	2	1	99107047
XT0	=QG	2002-1407 2002-1291	MORSETTO 4 CONDUTTORI TOPJOBS 2.5mmq TERRA FINALE PER MORSETTO 2 CONDUTTORI TOPJOBS 2.5mmq	TERMINAL 4 WIRES TOPJOBS 2.5mmq GROUND TERMINAL ENDING 2 WIRES TOPJOBS 2.5mmq	Wago Wago		2 1	99102947 99102940
XT1	=QG	2002-1404 2002-1401	MORSETTO 4 CONDUTTORI TOPJOBS 2.5mmq BLU MORSETTO 4 CONDUTTORI TOPJOBS 2.5mmq	TERMINAL 4 WIRES TOPJOBS 2.5mmq BLUE TERMINAL 4 WIRES TOPJOBS 2.5mmq	Wago Wago		1 2	99102946 99102945
YVC1.1	=QG	YVC	SOLENOIDE GAS CALDO	HOT GAS ELECTROVALVE	Rivacold	5	1	
YVL1.1	=QG	YVL	SOLENOIDE LIQUIDO	LIQUID ELECTROVALVE	Rivacold	5	1	

02	DISTINTA MATERIALI	22/05/23	GIANNOT	DATA	09/09/22		BECM1301xAxxP11 1X300 1 COMP.	EBC11L02000P	= +		
01	CONN.SONDE TEMP.	26/09/22	GIANNOT	DISEGN.	GIANNOTTI						
REV.	MODIFICA	DATA	FIRMA	APPR.	GIUNTA	SOST. IL :	SOST. DA :	FILE : EBC11L02000P.dwg	DISTINTA MATERIALI COMPONENTS LIST	5603-0606	FG. 8 8 F.S. /