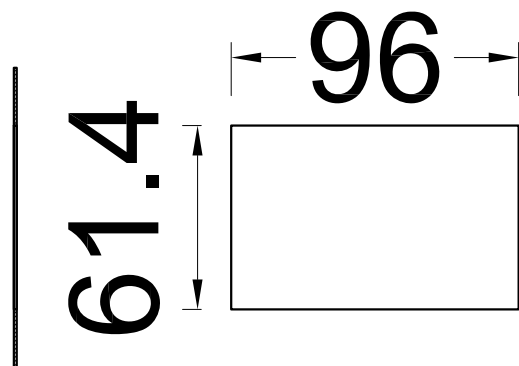
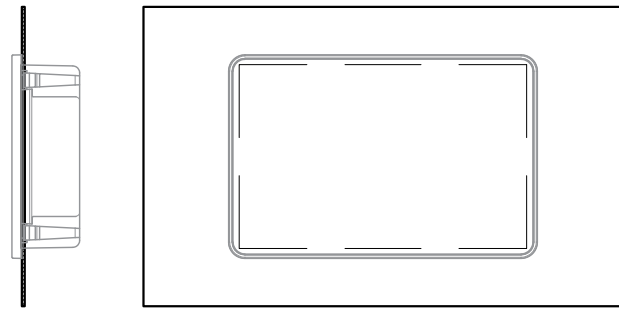


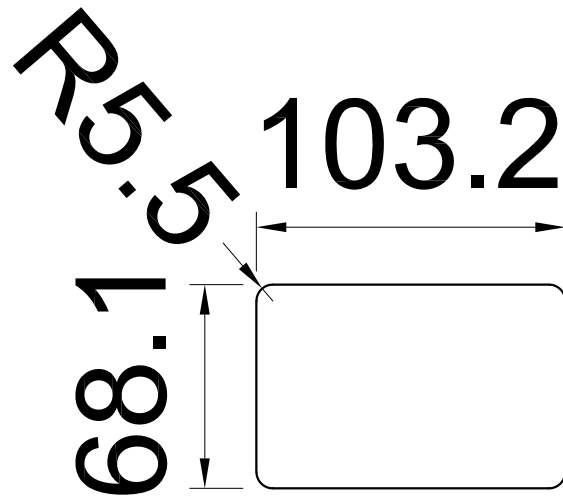
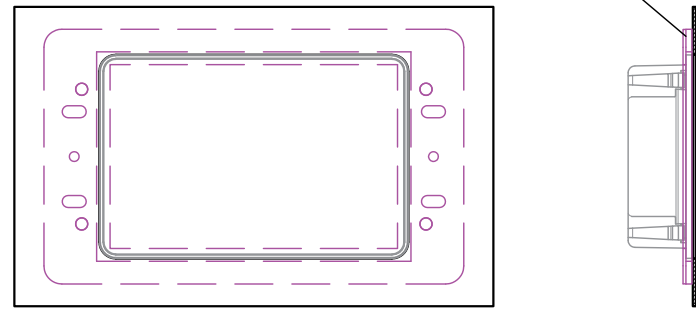
Montage in CNS

Standard



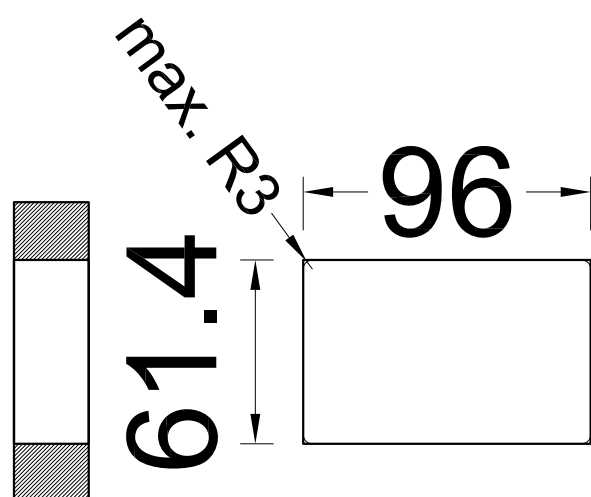
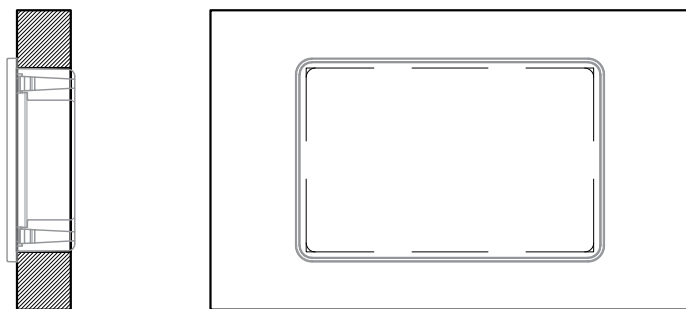
flächenbündig

87033911
Displayaufnahme flächenbündig CNS

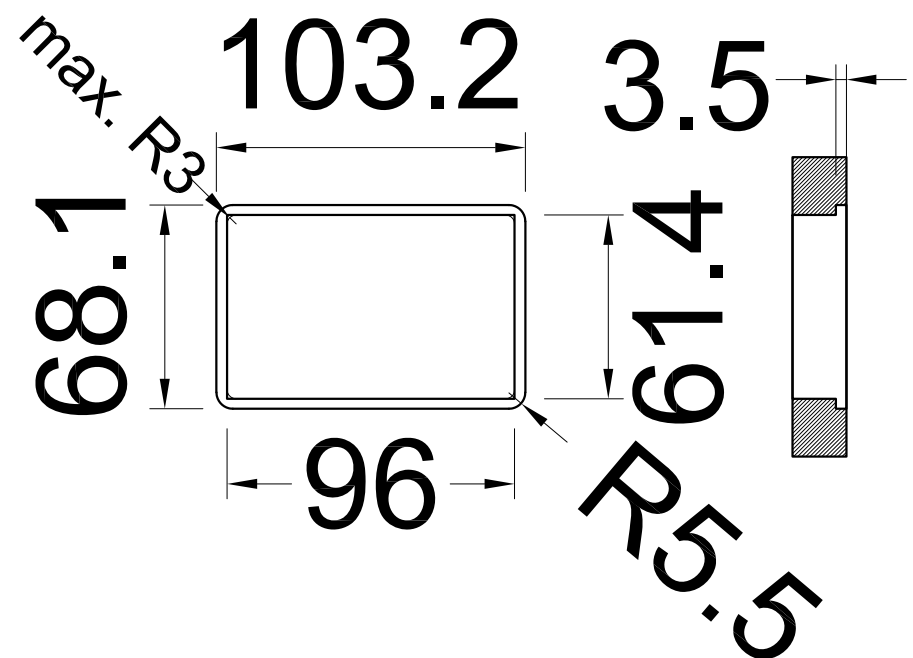
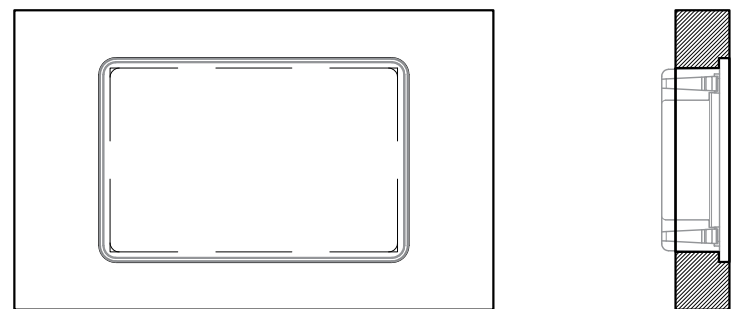


Montage in Holz

Standard



flächenbündig



Die maximale Eckenrundung für den Ausschnitt 96x61mm darf bei Holzblenden 3mm (Fräser-Ø 6mm) nicht überschreiten!

Die maximale Eckenrundung für den Ausschnitt 96x61mm darf bei Holzblenden 3mm (Fräser-Ø 6mm) nicht überschreiten!