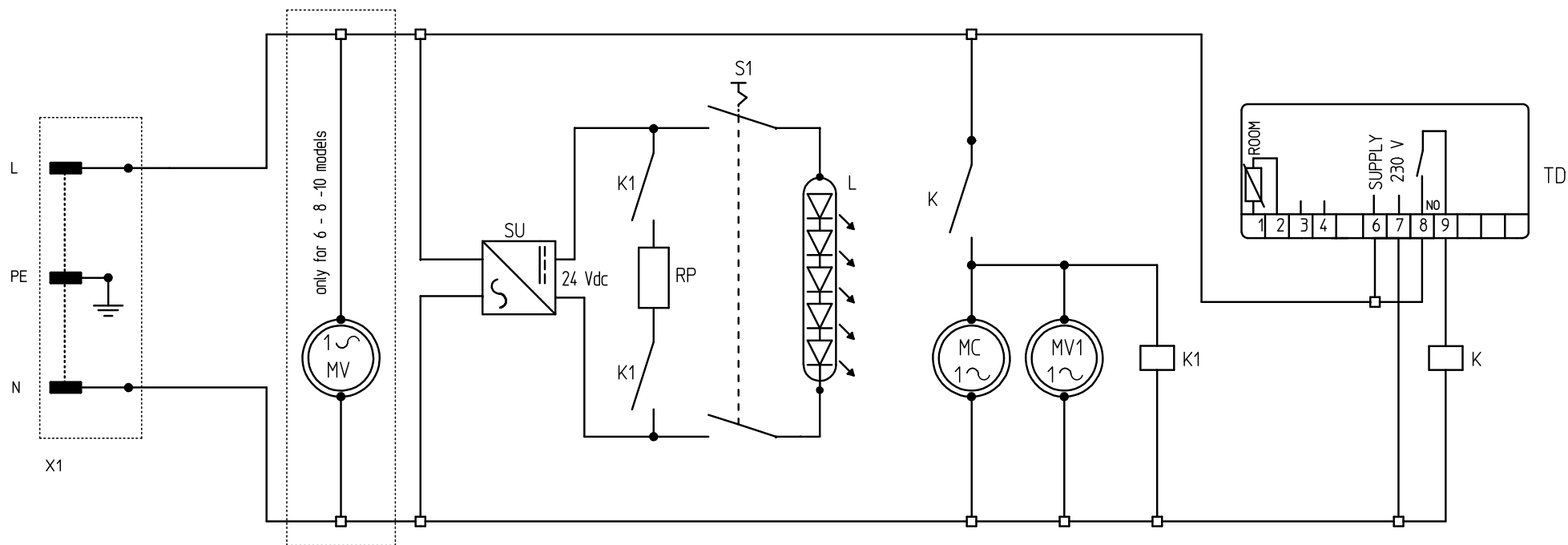


# Schaltplan

## Speiseeisvitrine **DOLCHE VITA 4-LX**

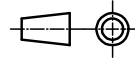
[Art. 46543690050]





S1 INTERRUTTORE LAMPADA  
 MC COMPRESSORE  
 MV1 MOTOVENTOLA CONDENSATORE  
 MV MOTOVENTOLA INTERNA  
 SU ALIMENTATORE LED  
 L LAMPADA  
 K RELE COMPRESSORE  
 TD TERMOSTATO ELETTRICO  
 RP RESISTENZA PIANO APPOGGIO

S1 LAMP SWITCH  
 MC COMPRESSOR  
 MV1 CONDENSER FAN  
 MV INTERNAL FAN  
 SU LAMP SUPPLY  
 L LAMP  
 K COMPRESSOR RELAY  
 TD ELECTRONIC THERMOSTAT  
 RP TOP HEATER

01		07-01-2016	INSERTO NOTA PER MOTOVENTOLA INTERNA	F.V.
INDEX	DATE	MODIFY		NAME
AUTHOR		filippo VIARINO		 <b>GENERAL TOLERANCE</b> ISO 2768-MK
CONT.		filippo VIARINO		
APPR.		FOSSATI		
DATE	11-10-2010	MATERIAL		
LAST UPDATE		DESCRIPTION	SCHEMA ELETTRICO	
SCALE	1:1	SIZE	A3	MODEL
			DOLCEVITA	CODE
			26.96.451	
THIS DRAWING IS PROPERTY OF MONDIAL GROUP S.r.l. IT CAN NOT BE COPIED, SHOWN, TO THIRD PART WITHOUT PRIOR AUTHORIZATION				

NordCap GmbH & Co. KG  
Thalendorststraße 15  
28307 Bremen  
Hauptsitz (Service, Finanzen & Personal, Lager, IT, Marketing)

Telefon: +49 421 48557-0  
Telefax: +49 421 488650  
E-Mail: [bremen@nordcap.de](mailto:bremen@nordcap.de)

Die NordCap Verkaufsniederlassungen in Deutschland:

Nord: Hamburg • Ost: Berlin • Süd: Ingelheim • West: Erkrath

The logo for NordCap, featuring the company name in a bold, black, sans-serif font. A registered trademark symbol (®) is positioned to the upper right of the 'p'. To the right of the text is a stylized black graphic element consisting of a diagonal line that curves upwards and to the right, resembling a checkmark or a dynamic arrow.

PROFESSIONELL KÜHLEN