

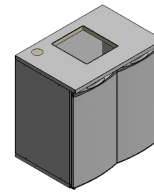
# Ersatzteilliste-Explosionszeichnung

## Fasskühler FK 2-R-XL

[Artikel-Nr.: 46710401001-0-0-0]



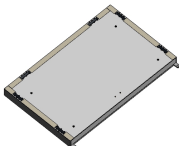

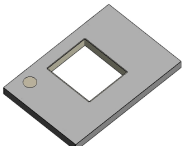



Art. Code: 10401001-0-0-0



Keg Box - 2x1  
 Chambre de Refroidissement des Fûts - 2x1  
 Câmara para Arrefecimento de Barris - 2x1  
 Cella per fusti - 2x1  
 Fassbox - 2x1

Code	Description	
41801084	Magnetic gasket 966 x 494 mm Joint magnétique 966 x 494 mm - gris Vedantes 966 x 494 cinz. - NOVO (Nova feira) Guarnizione magnetica 966 x 494 mm Magnetchichtung 966 x 494 mm Burlate magnético 966 x 494 mm	
42601066	Floor covers Cache-pieds V1 Taco para Pés V1 Cappucci del pavimento Abdeckungen für Paneelboden Tapa furos del suelo	
42601068	Screw cap for 6 mm hexagonal hole Cache pour trou à six pans 6 mm Taco Cinza p/ Furo Sextavado de 6 mm Cappucci per perforazione ad esagono di 6 mm Kunststoffstopfen für Bohrung mit 6 mm Sechskant Tapone para perforación hezagonal de 6 mm	
45903001	Hex key 6 mm Clé Allen 6 mm Chave Umbrako 6 mm Chiave di brugola 6 mm Innensechskantschlüssel 6 mm Llave Allen 6 mm	
45907001	Lower stainless steel stud screw diam.15 x 27 mm Boulon inférieur en acier inox diam.15 x 27 mm Perno Inferior Inox diam.15 x 27 mm Perno inferiore in acciaio inox diam.15 x 27 mm Unterer Bolzen aus Edelstahl diam.15 x 27 mm Perno inferior en acero inoxidable diam.15 x 27 mm	
45907010	Upper galvanized bolt diam.11,5 x 34 mm Boulon supérieur galvanisé diam.11,5 x 34 mm Perno Superior V1 Zinc. diam.11,5 x 34 mm Perno superiore zincato diam.11,5 x 34 mm Oberer verzinkter Bolzen aus Edelstahl diam.11,5 x 34 mm Perno superior galvanizado diam.11,5 x 34 mm	
61401013	Back panel Panneau arrière Painel da Costa - 2B (V1-C01) Pannello posteriore Rückwandpaneel Panel posterior	
61401211	Ironmongery set Ensemble de quincaillerie Conjunto de Ferragens das Câmaras V1- 2B Set di ferramenta Eisenwaren Einsatz Conjunto de ferrería	

61401278	Right hand door Porte droite Porta Pequena Direita CPL (V1-PP) Porta destra Rechtsseitige Tür Puerta derecha	
61401279	Left hand door Porte gauche Porta Pequena Esquerda CPL (V1-PP) Porta sinistra Linksseitige Tür Puerta izquierda	
61401296	Floor panel Panneau de sol Painel do Fundo - 2x1B (V1- F01) Pannello pavimento Paneelboden Panel de suelo	
61401303	Side panel Panneau latéral Painel Lateral - 1B (V1-L01) Pannello laterale Seitenwandpaneel Panel lateral	
61401307	Top panel Panneau du dessus Painel do Tampo - 2x1B (V1-T01) Pannello del piano Abdeckplatte Panel de encimera	
61401311	Pillar Pilier Pilar CPL Pilastro Säule Pilar	

**Finanzen/Service**  
**28307 Bremen**  
Thalenhorststraße 15  
Tel.+49 421 48557-0  
Fax+49 421 488650  
bremen@nordcap.de

**Vertrieb Ost**  
**12681 Berlin**  
Wolfener Straße 32/34, Haus K  
Tel.+49 30 936684-0  
Fax+49 30 936684-44  
berlin@nordcap.de

**Vertrieb West**  
**40699 Erkrath**  
Max-Planck-Straße 30  
Tel.+49 211 540054-0  
Fax+49 211 540054-54  
erkrath@nordcap.de

**Vertrieb Nord**  
**21079 Hamburg**  
Großmoorbogen 5  
Tel.+49 40 766183-0  
Fax+49 40 770799  
hamburg@nordcap.de

**Vertrieb Süd**  
**55218 Ingelheim**  
Hermann-Bopp-Straße 4  
Tel.+49 6132 7101-0  
Fax+49 6132 7101-20  
ingelheim@nordcap.de



[www.nordcap.de](http://www.nordcap.de)